

# \$35,000 - 5222 55 Avenue, Tofield

MLS® #E4443570

**\$35,000**

0 Bedroom, 0.00 Bathroom,  
Single Family on 0.00 Acres

Tofield, Tofield, AB

52.5' x 115' serviced lot in Ketchamoot Plains subdivision in Tofield. Unobstructed view of the countryside! Residential Building Tax Incentive for this lot. Commuting distances from Tofield: Sherwood Park (50 km), Edmonton (67 km), YEG Airport (75 km), Fort Saskatchewan (74 km), and Camrose (50 km). A must see!!!

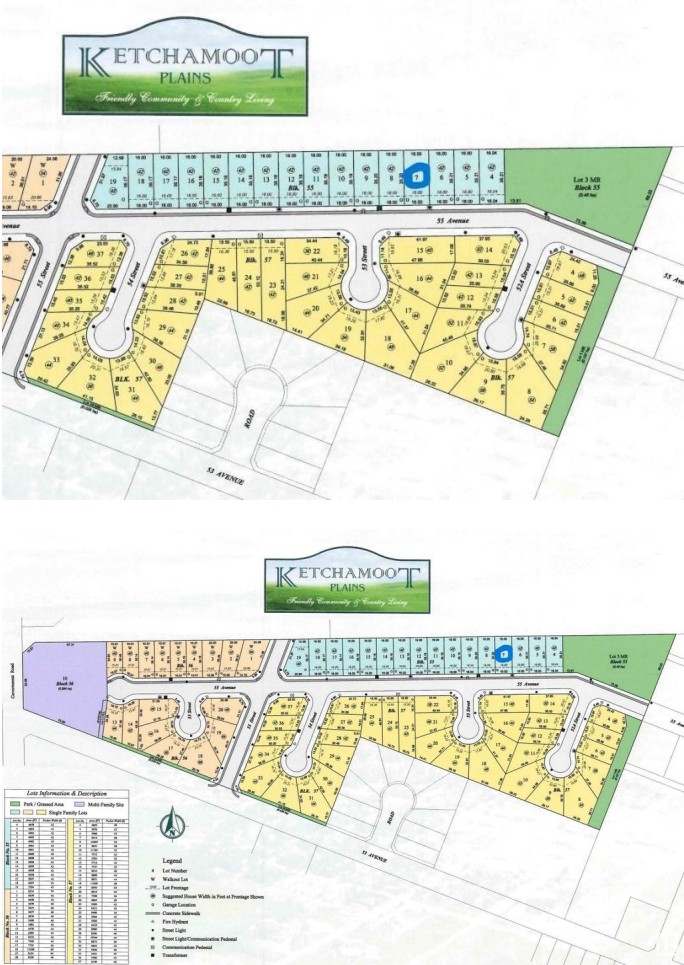
## Essential Information

MLS® #	E4443570
Price	\$35,000
Bathrooms	0.00
Acres	0.00
Type	Single Family
Sub-Type	Vacant Lot/Land
Status	Active

## Community Information

Address	5222 55 Avenue
Area	Tofield
Subdivision	Tofield
City	Tofield
County	ALBERTA
Province	AB
Postal Code	T0B 4J0

## Exterior



Exterior Features   Flat Site, No Back Lane

**Additional Information**

Date Listed                June 20th, 2025  
Days on Market        13  
Zoning                      Zone 80

DATA IS DEEMED RELIABLE BUT IS NOT GUARANTEED ACCURATE BY THE REALTORS® ASSOCIATION OF EDMONTON. COPYRIGHT 2025 BY THE REALTORS® ASSOCIATION OF EDMONTON. ALL RIGHTS RESERVED.Trademarks are owned or controlled by the Canadian Real Estate Association (CREA) and identify real estate professionals who are members of CREA (REALTOR®, REALTORS®) and/or the quality of services they provide (MLS®, Multiple Listing Service®)  
Listing information last updated on July 3rd, 2025 at 8:33am MDT