

\$409,900 - 4231 86 Street, Edmonton

MLS® #E4443811

\$409,900

5 Bedroom, 3.00 Bathroom, 1,546 sqft
Single Family on 0.00 Acres

Tweddle Place, Edmonton, AB

Opportunity Knocks in Tweddle Place! Transform this meticulously maintained bungalow with a double garage into your personal oasis. From the moment you step through the front door, youâ€™ll be captivated. The spacious living room features vaulted open beam ceilings, a stunning stone wood-burning fireplace, an abundance of natural light, and a beautiful custom shelving unit. The kitchen is both functional and stylish, with updated cabinetry, island, and eating nook that flows into the formal dining area. The main floor offers 3 generously sized bedrooms, a full 4pc bathroom, and a convenient 3pc bath. The fully finished basement provides even more living space with a large rec room with a 2nd wood-burning fireplace, 2 additional bedrooms, another 3pc bathroom, storage room, and a spacious utility area with a washer, dryer, refrigerator, and stove. Step outside to a fully fenced backyard with a huge garden, shed, and plenty of space for outdoor enjoyment. This is the opportunity youâ€™ve been waiting for!

Built in 1973

Essential Information

MLS® #	E4443811
Price	\$409,900



Bedrooms	5
Bathrooms	3.00
Full Baths	3
Square Footage	1,546
Acres	0.00
Year Built	1973
Type	Single Family
Sub-Type	Detached Single Family
Style	Bungalow
Status	Active

Community Information

Address	4231 86 Street
Area	Edmonton
Subdivision	Tweddle Place
City	Edmonton
County	ALBERTA
Province	AB
Postal Code	T6K 1C5

Amenities

Amenities	Open Beam
Parking Spaces	4
Parking	Double Garage Attached

Interior

Appliances	Dishwasher-Built-In, Dryer, Garage Control, Garage Opener, Microwave Hood Fan, Storage Shed, Washer, Window Coverings, Refrigerators-Two, Stoves-Two
Heating	Forced Air-1, Natural Gas
Fireplace	Yes
Fireplaces	Brick Facing, Insert, Masonry
Stories	2
Has Basement	Yes
Basement	Full, Finished

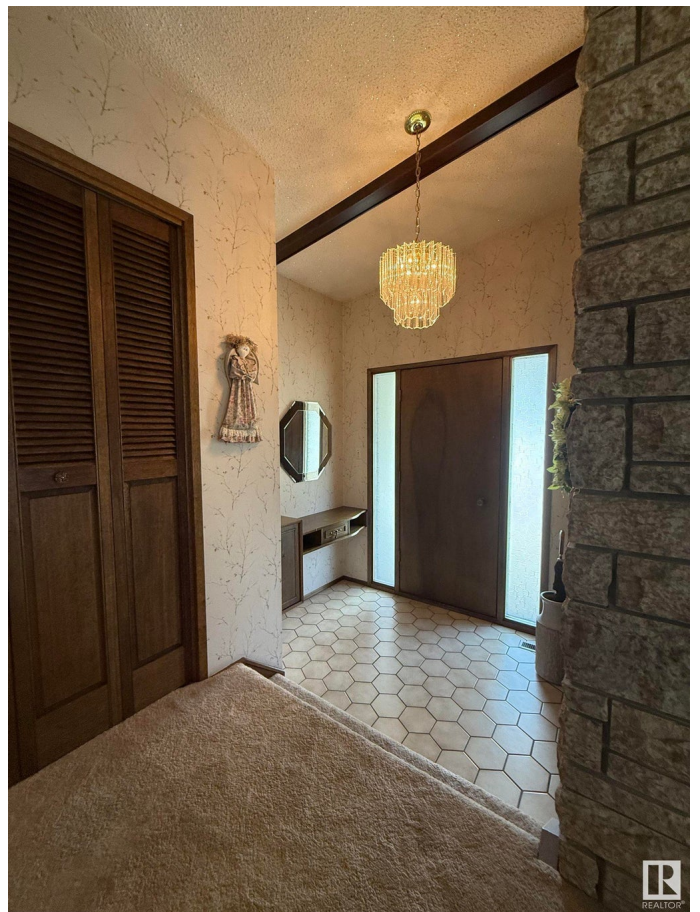
Exterior

Exterior	Wood, Brick, Stucco
Exterior Features	Playground Nearby, Public Transportation, Schools, Shopping Nearby

Roof	Tar & Gravel
Construction	Wood, Brick, Stucco
Foundation	Concrete Perimeter

Additional Information

Date Listed	June 22nd, 2025
Days on Market	2
Zoning	Zone 29



DATA IS DEEMED RELIABLE BUT IS NOT GUARANTEED ACCURATE BY THE REALTORS® ASSOCIATION OF EDMONTON. COPYRIGHT 2025 BY THE REALTORS® ASSOCIATION OF EDMONTON. ALL RIGHTS RESERVED. Trademarks are owned or controlled by the Canadian Real Estate Association (CREA) and identify real estate professionals who are members of CREA (REALTOR®, REALTORS®) and/or the quality of services they provide (MLS®, Multiple Listing Service®)

Listing information last updated on June 24th, 2025 at 8:02am MDT