

## **\$799,000 - 16 59316 Rge Rd 54, Rural Barrhead County**

MLS® #E4443879

**\$799,000**

6 Bedroom, 3.00 Bathroom, 1,271 sqft

Rural on 2.75 Acres

Summer Lea, Rural Barrhead County, AB

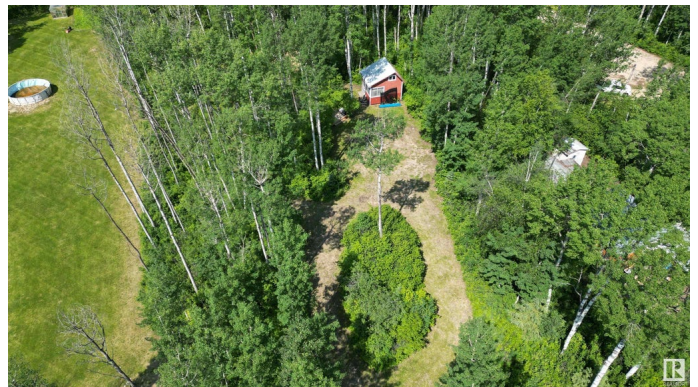
Turn key & must see! Meticulously kept, quality modern home on FOUR LOTS in the community of Summerlea minutes from the waterfront at Thunder Lake. Huge 2.75 acre total parcel size. Peaceful recreational atmosphere year round. Excellent landscaping with mature foliage privacy buffer & backing onto crown land. Owned lots & affordable yearly condo fees for shared use of common lands/clubhouse. 2009 build home boasts 5 beds, 3 full baths & double attached garage. Quality finishes throughout including hardwood flooring, stainless appliances & stucco siding. 3 ways to heat with basement/garage in-floor, central forced air & bonus wood stove. Hot tub ready with pad/hookups. Drilled well w/ cistern buffer. Additional heated double detached garage on lot 17 + boat/RV parking. Family/friends RV parking w/ hookups on lot 14 including small bunkhouse, private horseshoe & fire pit. 2 sets of executive steel privacy gates. Seller willing to sell individual lots separately. Quick possession available. Don't miss out!

Built in 2009

### **Essential Information**

MLS® # E4443879

Price \$799,000



Bedrooms	6
Bathrooms	3.00
Full Baths	3
Square Footage	1,271
Acres	2.75
Year Built	2009
Type	Rural
Sub-Type	Detached Single Family
Style	Bungalow
Status	Active

### Community Information

Address	16 59316 Rge Rd 54
Area	Rural Barrhead County
Subdivision	Summer Lea
City	Rural Barrhead County
County	ALBERTA
Province	AB
Postal Code	T0E 1Y0

### Amenities

Features	Off Street Parking, Deck, Hot Water Tankless, No Smoking Home, Parking-Extra, Vaulted Ceiling, Vinyl Windows, Workshop, Natural Gas BBQ Hookup
----------	--

### Interior

Interior Features	ensuite bathroom
Heating	Forced Air-1, In Floor Heat System, Natural Gas, Wood
Stories	2
Has Basement	Yes
Basement	Full, Finished

### Exterior

Exterior	Wood
Exterior Features	Backs Onto Park/Trees, Lake Access Property, Landscaped, Private Setting, Recreation Use, Sloping Lot
Construction	Wood
Foundation	Concrete Perimeter

### Additional Information

Date Listed June 23rd, 2025

Days on Market 1

Zoning Zone 70

DATA IS DEEMED RELIABLE BUT IS NOT GUARANTEED ACCURATE BY THE REALTORS® ASSOCIATION OF EDMONTON. COPYRIGHT 2025 BY THE REALTORS® ASSOCIATION OF EDMONTON. ALL RIGHTS RESERVED. Trademarks are owned or controlled by the Canadian Real Estate Association (CREA) and identify real estate professionals who are members of CREA (REALTOR®, REALTORS®) and/or the quality of services they provide (MLS®, Multiple Listing Service®)

Listing information last updated on June 24th, 2025 at 8:17am MDT