

\$425,000 - 263 Terra Nova Crescent, Cold Lake

MLS® #E4443893

\$425,000

3 Bedroom, 2.00 Bathroom, 1,290 sqft

Single Family on 0.00 Acres

Cold Lake North, Cold Lake, AB

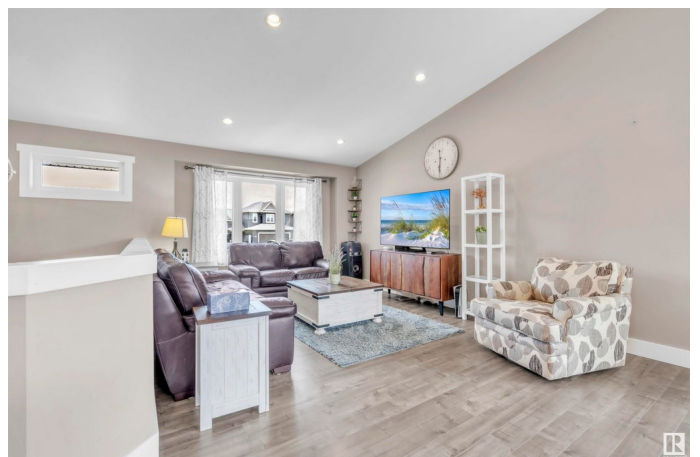
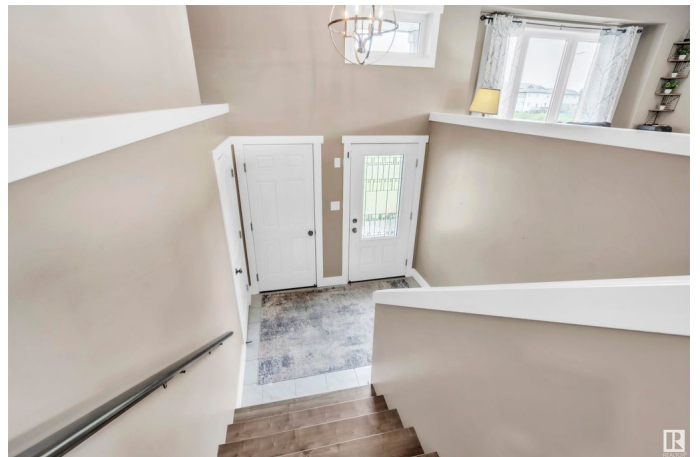
Fantastic family home in the growing community of Parkview Estates - just down the road from Kinosoo beach and close to the hospital. This home have been lovingly maintained and ready for a quick possession. With 3 bedrooms upstairs and a party finished basement downstairs waiting for your final touches this is a great option. The main floor features laminate flooring throughout and vaulted ceilings overhead. The open concept living area includes bright living room with huge front window; spacious dining room and great working kitchen with centre island, quartz countertops, pantry and gas range. Down the hall are 3 bedrooms including primary with walk in closet and ensuite. The basement is already warmed by slab heat and has been partly framed with a bedroom/office space partly completed. Central Air is also an added benefit of this home. Outside, the property is fully fenced and landscaped & a heated double car garage rounds out this great home. Join the growing community of Parkview Estates today!

Built in 2017

Essential Information

MLS® # E4443893

Price \$425,000



Bedrooms	3
Bathrooms	2.00
Full Baths	2
Square Footage	1,290
Acres	0.00
Year Built	2017
Type	Single Family
Sub-Type	Detached Single Family
Style	Bi-Level
Status	Active

Community Information

Address	263 Terra Nova Crescent
Area	Cold Lake
Subdivision	Cold Lake North
City	Cold Lake
County	ALBERTA
Province	AB
Postal Code	T9M 0L5

Amenities

Amenities	Air Conditioner, Deck, Vaulted Ceiling, See Remarks
Parking	Double Garage Attached, Heated, Parking Pad Cement/Paved

Interior

Interior Features	ensuite bathroom
Appliances	Air Conditioning-Central, Dryer, Microwave Hood Fan, Refrigerator, Stove-Gas, Washer
Heating	Forced Air-1, In Floor Heat System, Natural Gas
Stories	2
Has Basement	Yes
Basement	Full, Partially Finished

Exterior

Exterior	Wood, Vinyl
Exterior Features	Fenced, Landscaped, Playground Nearby
Roof	Asphalt Shingles
Construction	Wood, Vinyl
Foundation	Concrete Perimeter

School Information

Elementary	Cold Lake Elementary
Middle	Nelson Heights Middle
High	Cold Lake High

Additional Information

Date Listed	June 23rd, 2025
Days on Market	1
Zoning	Zone 60

DATA IS DEEMED RELIABLE BUT IS NOT GUARANTEED ACCURATE BY THE REALTORS® ASSOCIATION OF EDMONTON. COPYRIGHT 2025 BY THE REALTORS® ASSOCIATION OF EDMONTON. ALL RIGHTS RESERVED.Trademarks are owned or controlled by the Canadian Real Estate Association (CREA) and identify real estate professionals who are members of CREA (REALTOR®, REALTORS®) and/or the quality of services they provide (MLS®, Multiple Listing Service®)

Listing information last updated on June 24th, 2025 at 4:32am MDT