

# \$144,800 - 112 1628 48 Street, Edmonton

MLS® #E4443967

**\$144,800**

2 Bedroom, 1.00 Bathroom, 878 sqft

Condo / Townhouse on 0.00 Acres

Pollard Meadows, Edmonton, AB

New floors, and new paint new stainless steel appliances, new tiles around the bathtub  
Main floor 914 sq.ft, 2 bedroom condo. Superb floor plan, quick possession available. Close to Millwood's Town Centre Mall, Public Transportation, included in-suite storage.  
Won't last long.

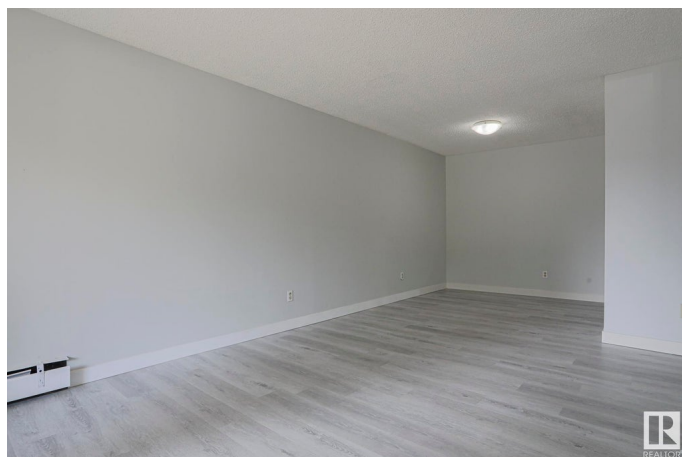
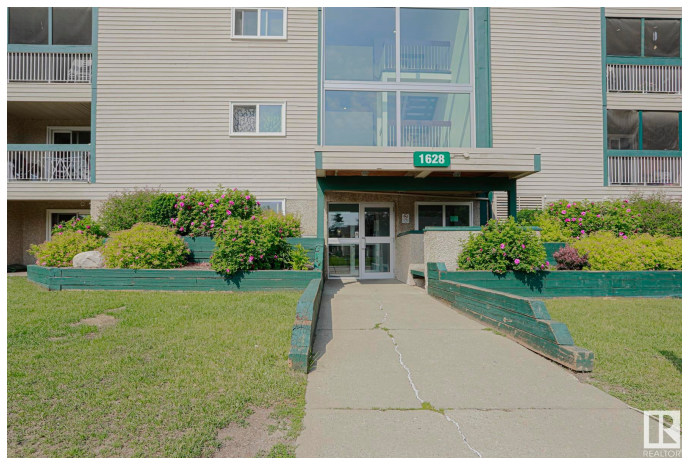
Built in 1981

## Essential Information

MLS® #	E4443967
Price	\$144,800
Bedrooms	2
Bathrooms	1.00
Full Baths	1
Square Footage	878
Acres	0.00
Year Built	1981
Type	Condo / Townhouse
Sub-Type	Lowrise Apartment
Style	Single Level Apartment
Status	Active

## Community Information

Address	112 1628 48 Street
Area	Edmonton
Subdivision	Pollard Meadows



City	Edmonton
County	ALBERTA
Province	AB
Postal Code	T6L 5P2

### **Amenities**

Amenities	See Remarks
Parking	Stall

### **Interior**

Appliances	Dishwasher-Built-In, Hood Fan, Refrigerator, Stove-Electric
Heating	Forced Air-1, Natural Gas
# of Stories	4
Stories	1
Has Basement	Yes
Basement	None, No Basement

### **Exterior**

Exterior	Wood, Vinyl
Exterior Features	Playground Nearby, Public Transportation, Schools, Shopping Nearby, See Remarks
Roof	Asphalt Shingles
Construction	Wood, Vinyl
Foundation	Concrete Perimeter

### **Additional Information**

Date Listed	June 23rd, 2025
Days on Market	85
Zoning	Zone 29
Condo Fee	\$504

DATA IS DEEMED RELIABLE BUT IS NOT GUARANTEED ACCURATE BY THE REALTORS® ASSOCIATION OF EDMONTON. COPYRIGHT 2025 BY THE REALTORS® ASSOCIATION OF EDMONTON. ALL RIGHTS RESERVED. Trademarks are owned or controlled by the Canadian Real Estate Association (CREA) and identify real estate professionals who are members of CREA (REALTOR®, REALTORS®) and/or the quality of services they provide (MLS®, Multiple Listing Service®)

Listing information last updated on September 16th, 2025 at 8:32pm MDT