

# \$199,900 - 15 474012 Rge Rd 242, Rural Wetaskiwin County

MLS® #E4444395

**\$199,900**

0 Bedroom, 0.00 Bathroom,  
Rural on 6.62 Acres

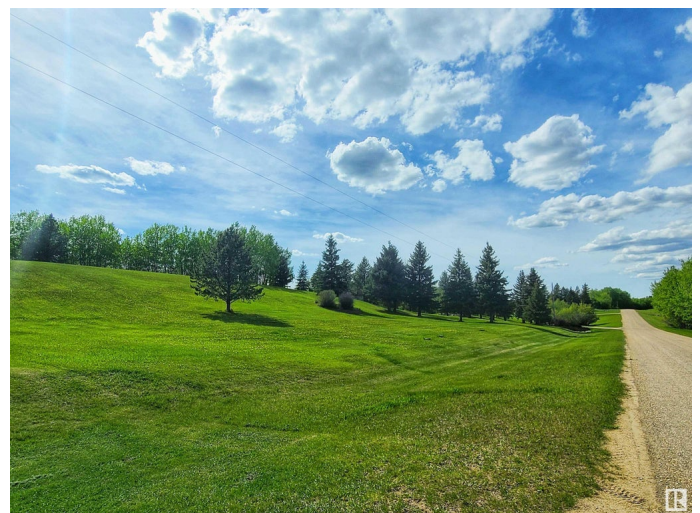
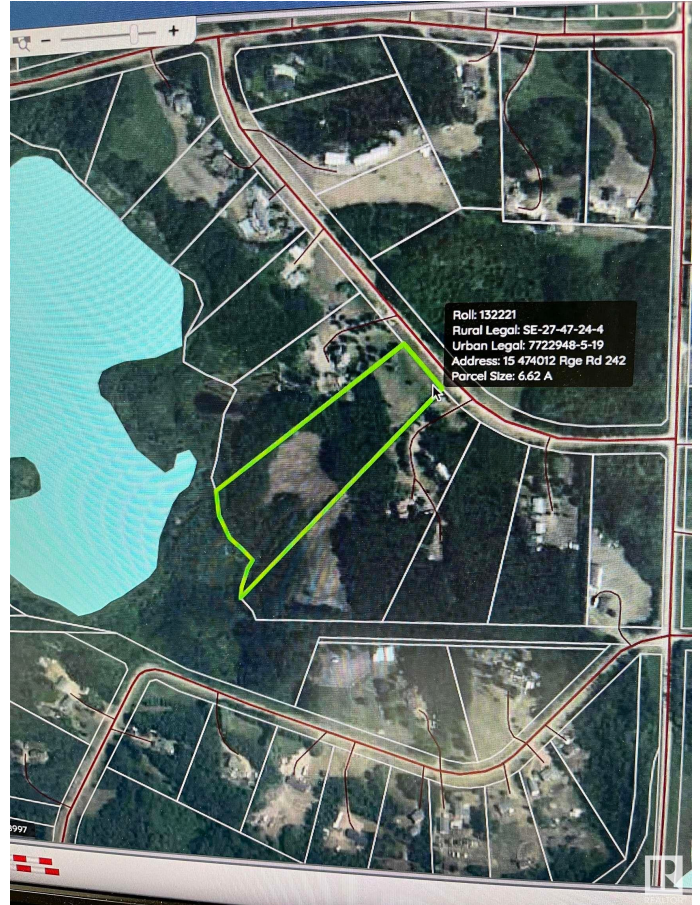
Nordic Place, Rural Wetaskiwin County, AB

Welcome to Nordic place!! One of the Millet areas most sought after subdivisions that is home to some incredible views! This stunning building site has a 6.62 acres to choose a spot to build your Dream home! Walkout capabilities or surrounded by trees and nature. You choose!! The unique location features a huge sandy ridge/hill that runs across the property. The tremendous amount of sand is great for drainage and also provides a designer with many options when it comes to excavation and building sites. This property features pavement access right to the property line. The lot is unserviced with power and natural gas at the road. Local wells typically produce 5+ GPM. This is a must see acreage site!

## Essential Information

MLS® #	E4444395
Price	\$199,900
Bathrooms	0.00
Acres	6.62
Type	Rural
Sub-Type	Vacant Lot/Land
Status	Active

## Community Information



Address	15 474012 Rge Rd 242
Area	Rural Wetaskiwin County
Subdivision	Nordic Place
City	Rural Wetaskiwin County
County	ALBERTA
Province	AB
Postal Code	T0C 1Z0

### **Exterior**

Exterior Features	Golf Nearby, Hillside, Private Setting, Rolling Land, Sloping Lot, Treed Lot
-------------------	--

### **Additional Information**

Date Listed	June 25th, 2025
Days on Market	32
Zoning	Zone 80

DATA IS DEEMED RELIABLE BUT IS NOT GUARANTEED ACCURATE BY THE REALTORS® ASSOCIATION OF EDMONTON. COPYRIGHT 2025 BY THE REALTORS® ASSOCIATION OF EDMONTON. ALL RIGHTS RESERVED. Trademarks are owned or controlled by the Canadian Real Estate Association (CREA) and identify real estate professionals who are members of CREA (REALTOR®, REALTORS®) and/or the quality of services they provide (MLS®, Multiple Listing Service®)

Listing information last updated on July 27th, 2025 at 6:02pm MDT