

\$839,900 - 55360 Rge Road 205, Rural Strathcona County

MLS® #E4444443

\$839,900

4 Bedroom, 2.00 Bathroom, 1,160 sqft

Rural on 5.44 Acres

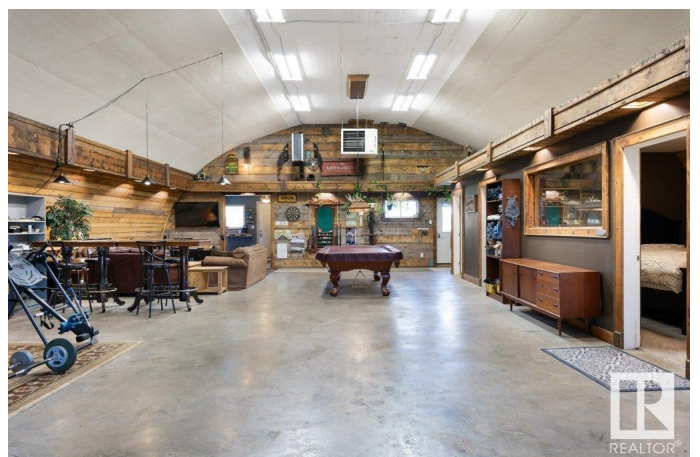
None, Rural Strathcona County, AB

DREAM SHOPS!! Located on all-paved access. This one-of-a-kind manicured acreage is located only 10 minutes from Fort Saskatchewan, on 5.44 acres. COMPLETELY renovated bungalow with modern finishes has a total of 4 bedrooms, 2 full baths, open concept kitchen, large family room, in-floor heat on main and in basement. Step outside to enjoy an oversized, beautiful custom deck for large family gatherings. The home garage/shop 32x22 is Heated & Foam insulated top to bottom, currently used as a woodworking shop. The property has 2 additional quonsets - a 38x43 with full electrical, a very unique 70x41 over 3000sq ft. fully heated with living quarters, 1½ kitchen, full bathroom, comes with a commercial ventilation system for large cookouts, has its own well and septic system, nothing spared here, a must see. In addition to storage, there is a large, newly tinned pole shed. The property is truly unique & offers a VARIETY OF POSSIBILITIES. Easy access to Scottford with all the amenities of the Fort!!

Built in 1957

Essential Information

MLS® # E4444443



Price	\$839,900
Bedrooms	4
Bathrooms	2.00
Full Baths	2
Square Footage	1,160
Acres	5.44
Year Built	1957
Type	Rural
Sub-Type	Detached Single Family
Style	Bungalow
Status	Active

Community Information

Address	55360 Rge Road 205
Area	Rural Strathcona County
Subdivision	None
City	Rural Strathcona County
County	ALBERTA
Province	AB
Postal Code	T8L 4B1

Amenities

Features	Deck, R.V. Storage, Workshop
----------	------------------------------

Interior

Heating	Forced Air-1, Natural Gas
Fireplace	Yes
Stories	2
Has Basement	Yes
Basement	Full, Finished

Exterior

Exterior	Wood
Exterior Features	Landscaped, Private Setting, Schools, Shopping Nearby, Treed Lot
Construction	Wood
Foundation	Concrete Perimeter

Additional Information

Date Listed	June 26th, 2025
-------------	-----------------

Days on Market 10

Zoning Zone 60

DATA IS DEEMED RELIABLE BUT IS NOT GUARANTEED ACCURATE BY THE REALTORS® ASSOCIATION OF EDMONTON. COPYRIGHT 2025 BY THE REALTORS® ASSOCIATION OF EDMONTON. ALL RIGHTS RESERVED. Trademarks are owned or controlled by the Canadian Real Estate Association (CREA) and identify real estate professionals who are members of CREA (REALTOR®, REALTORS®) and/or the quality of services they provide (MLS®, Multiple Listing Service®)

Listing information last updated on July 6th, 2025 at 12:17pm MDT