

\$2,300 - 2518 22 Avenue, Edmonton

MLS® #E4444487

\$2,300

3 Bedroom, 2.50 Bathroom, 1,604 sqft

Rental on 0.00 Acres

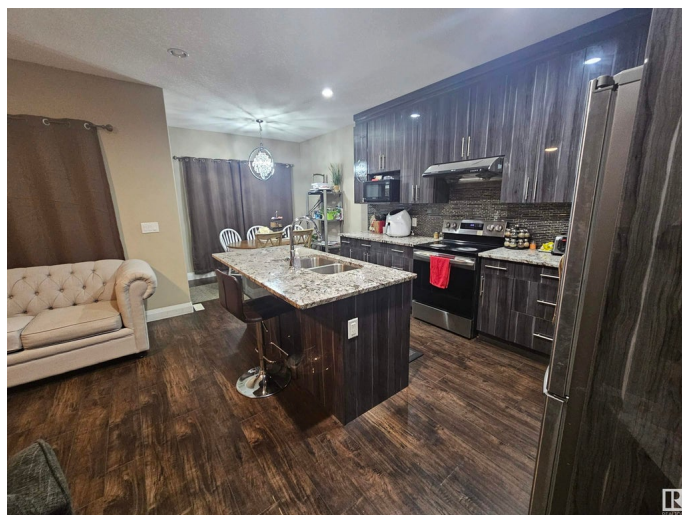
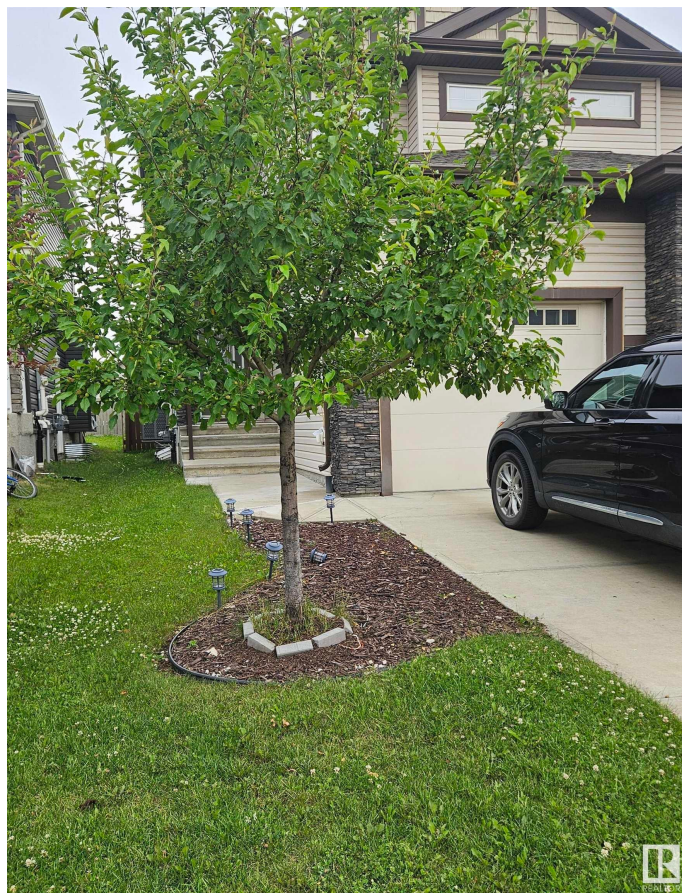
Laurel, Edmonton, AB

Beautiful and well-maintained half duplex for rent in the desirable Laurel community. This 2-storey home features a bright open-concept main floor with large windows, a modern kitchen with stainless steel appliances and breakfast bar, and a spacious living area. The upper level offers a large primary bedroom with a private ensuite, two additional bedrooms, and a full bath. Enjoy the convenience of a single attached garage, an unfinished basement ideal for storage or a home gym, and a private backyard. Located close to K-9 and high schools including Svend Hansen School, parks, walking trails, Meadows Rec Centre, shopping, and grocery stores. Quick access to Anthony Henday Drive and 17th Street. Pet-friendly with approval. A great home in a quiet, family-friendly neighborhood

Built in 2015

Essential Information

MLS® #	E4444487
Price	\$2,300
Bedrooms	3
Bathrooms	2.50
Full Baths	2
Half Baths	1
Square Footage	1,604



Acres	0.00
Year Built	2015
Type	Rental
Style	2 Storey
Status	Active

Community Information

Address	2518 22 Avenue
Area	Edmonton
Subdivision	Laurel
City	Edmonton
County	ALBERTA
Province	AB
Postal Code	T6T 0K1

Amenities

Parking	Single Garage Attached
---------	------------------------

Interior

Appliances	Dishwasher-Built-In, Dryer, Oven-Microwave, Refrigerator, Stove-Electric, Washer
------------	--

Additional Information

Date Listed	June 26th, 2025
Days on Market	11
Zoning	Zone 30

DATA IS DEEMED RELIABLE BUT IS NOT GUARANTEED ACCURATE BY THE REALTORS® ASSOCIATION OF EDMONTON. COPYRIGHT 2025 BY THE REALTORS® ASSOCIATION OF EDMONTON. ALL RIGHTS RESERVED.Trademarks are owned or controlled by the Canadian Real Estate Association (CREA) and identify real estate professionals who are members of CREA (REALTOR®, REALTORS®) and/or the quality of services they provide (MLS®, Multiple Listing Service®)

Listing information last updated on July 6th, 2025 at 10:47pm MDT