

\$214,500 - 39 53213 Hghway 31, Rural Parkland County

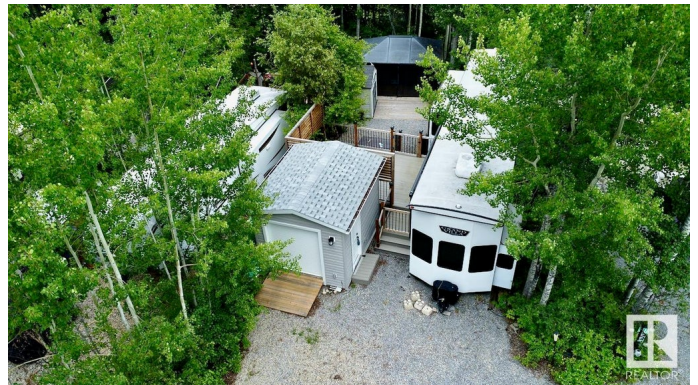
MLS® #E4444662

\$214,500

0 Bedroom, 0.00 Bathroom,
Rural on 0.07 Acres

The Summit (Parkland), Rural Parkland County, AB

Luxury Meets Leisure at The Summit.... Your Elevated Escape Awaits! This titled lot features a nearly new Salem Grand Villa with a spacious primary bedroom, two cozy lofts for extra sleeping, a full-size bathroom, and an elegant open-concept kitchen, dining, and living space. Step outside to your enclosed deck, or unwind in the screened gazebo nestled in privacy and nature. Pineridge offers a 12-hole golf course and a wide range of amenities: pickleball, playgrounds, outdoor kitchens, fitness and rec centres, laundry facilities, and more. Together, these amenities make Pineridge more than just a place to stay—it's a fully featured retreat designed for relaxation, activity, and connection. Escape the city with ease—this turnkey retreat is ready to enjoy for years to come!



Essential Information

MLS® #	E4444662
Price	\$214,500
Bathrooms	0.00
Acres	0.07
Type	Rural
Sub-Type	Vacant Lot/Land
Status	Active

Community Information

Address	39 53213 Hghway 31
Area	Rural Parkland County
Subdivision	The Summit (Parkland)
City	Rural Parkland County
County	ALBERTA
Province	AB
Postal Code	T0E 2B0

Exterior

Exterior Features Gated Community, Golf Nearby, Landscaped, Low Maintenance Landscape, No Through Road, Recreation Use

Additional Information

Date Listed	June 27th, 2025
Days on Market	10
Zoning	Zone 93
Condo Fee	\$135

DATA IS DEEMED RELIABLE BUT IS NOT GUARANTEED ACCURATE BY THE REALTORS® ASSOCIATION OF EDMONTON. COPYRIGHT 2025 BY THE REALTORS® ASSOCIATION OF EDMONTON. ALL RIGHTS RESERVED. Trademarks are owned or controlled by the Canadian Real Estate Association (CREA) and identify real estate professionals who are members of CREA (REALTOR®, REALTORS®) and/or the quality of services they provide (MLS®, Multiple Listing Service®)

Listing information last updated on July 7th, 2025 at 2:32pm MDT