

\$334,900 - 62330 Rge Rd 413a, Rural Bonnyville M.D.

MLS® #E4445001

\$334,900

3 Bedroom, 2.00 Bathroom, 1,520 sqft

Rural on 3.88 Acres

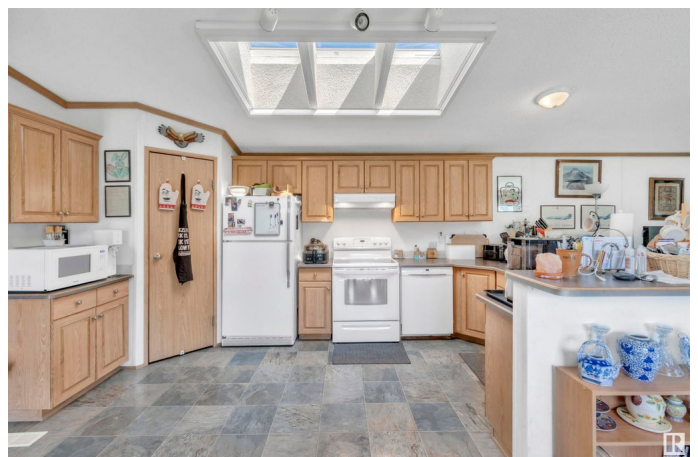
Cherry Ridge Estates, Rural Bonnyville M.D.,
AB

Country living never looked so good! Nestled on nearly 4 private acres, this attractive acreage offers the peace of rural life with space for all your outdoor hobbies. The open concept home features vaulted ceilings, large bright windows, and a cozy pellet stove in the living area. The kitchen is well equipped with ample cabinetry, counter space with a breakfast bar, and a corner pantry. The spacious primary bedroom has French doors leading to a lovely ensuite complete with a soaker tub. Two additional bedrooms, a full bathroom, and a dedicated laundry area round out the home. Outside, you'll find a 1.5-car garage, a 24x26 pop-up garage for extra storage or parking, plus additional outbuildings. Ideally located just 2 km from the Cherry Grove community centre and arena, and only 10 minutes to Cold Lake. Country life is calling you!

Built in 2003

Essential Information

MLS® #	E4445001
Price	\$334,900
Bedrooms	3
Bathrooms	2.00
Full Baths	2



Square Footage	1,520
Acres	3.88
Year Built	2003
Type	Rural
Sub-Type	Detached Single Family
Style	Bungalow
Status	Active

Community Information

Address	62330 Rge Rd 413a
Area	Rural Bonnyville M.D.
Subdivision	Cherry Ridge Estates
City	Rural Bonnyville M.D.
County	ALBERTA
Province	AB
Postal Code	T9M 1P2

Amenities

Features	Deck, Fire Pit, Skylight, Vaulted Ceiling, Vinyl Windows
----------	--

Interior

Interior Features	ensuite bathroom
Heating	Forced Air-1, Natural Gas
Stories	1
Has Basement	Yes
Basement	None, No Basement

Exterior

Exterior	Wood
Exterior Features	Fenced, Fruit Trees/Shrubs, Landscaped, Private Setting
Construction	Wood
Foundation	Piling

Additional Information

Date Listed	June 29th, 2025
Days on Market	30
Zoning	Zone 60

DATA IS DEEMED RELIABLE BUT IS NOT GUARANTEED ACCURATE BY THE REALTORS® ASSOCIATION OF EDMONTON. COPYRIGHT 2025 BY THE REALTORS® ASSOCIATION OF EDMONTON. ALL RIGHTS RESERVED. Trademarks are owned or controlled by the Canadian Real Estate Association (CREA) and identify real

estate professionals who are members of CREA (REALTOR®®, REALTORS®®) and/or the quality of services they provide (MLS®®, Multiple Listing Service®®)

Listing information last updated on July 29th, 2025 at 8:47pm MDT