

\$415,000 - 703 Sparrow Close, Cold Lake

MLS® #E4445144

\$415,000

5 Bedroom, 3.00 Bathroom, 1,284 sqft

Single Family on 0.00 Acres

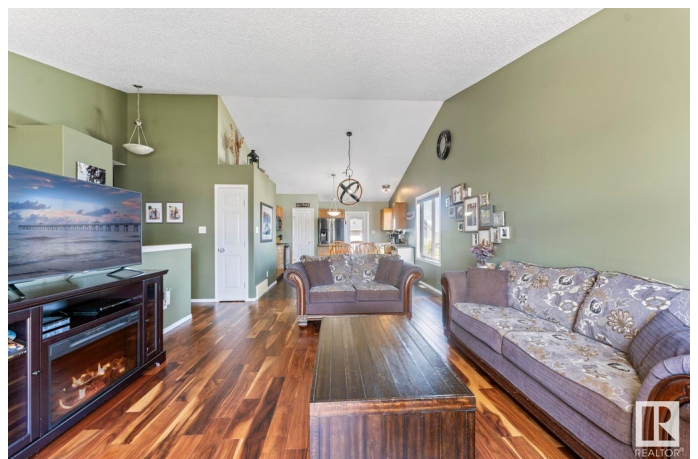
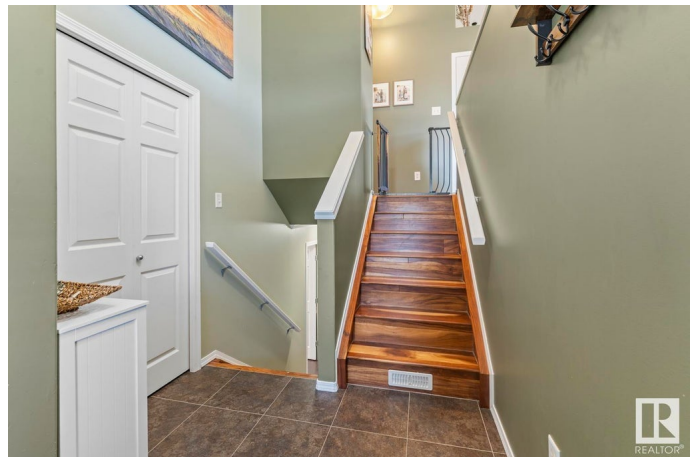
Cold Lake North, Cold Lake, AB

This 5 bedroom walk out bungalow is exactly what you have been looking for. Cul de sac living means a great place for the kids to play and this home is built for family. Upgraded Engineered Hardwood floors, an open concept kitchen/livingroom that goes on forever. So much Space! Vaulted ceilings and large upper windows lets natural light pour into your main living space. Upper floor has two good sized bedrooms, main floor 4 pc bath and a Primary with ensuite and WIC. Lower level has laminate flooring and large family room with garden view windows and 2 more bedrooms. Flex space aplenty, the walkout takes you to a lower patio and massive fenced back yard with great landscaping. The upper deck allows quiet nights for a BBQ with access directly off the kitchen. Ready for you to call home!

Built in 2007

Essential Information

MLS® #	E4445144
Price	\$415,000
Bedrooms	5
Bathrooms	3.00
Full Baths	3
Square Footage	1,284
Acres	0.00
Year Built	2007



Type	Single Family
Sub-Type	Detached Single Family
Style	Bi-Level
Status	Active

Community Information

Address	703 Sparrow Close
Area	Cold Lake
Subdivision	Cold Lake North
City	Cold Lake
County	ALBERTA
Province	AB
Postal Code	T9M 2B7

Amenities

Amenities	Deck, Hot Water Instant, No Smoking Home, Parking-Extra, Patio, Vaulted Ceiling, Vinyl Windows, Walkout Basement
Parking	Double Garage Attached, Front Drive Access, Parking Pad Cement/Paved

Interior

Interior Features	ensuite bathroom
Appliances	Dishwasher-Built-In, Dryer, Garage Control, Garage Opener, Microwave Hood Fan, Refrigerator, Stove-Electric, Washer, See Remarks
Heating	Forced Air-1, In Floor Heat System, Natural Gas
Stories	2
Has Basement	Yes
Basement	Full, Finished

Exterior

Exterior	Wood, Stone, Vinyl
Exterior Features	Cul-De-Sac, Fenced, Fruit Trees/Shrubs, Landscaped, Low Maintenance Landscape, No Back Lane, Playground Nearby, Schools
Roof	Asphalt Shingles
Construction	Wood, Stone, Vinyl
Foundation	Concrete Perimeter

School Information

Elementary	CLES
Middle	Nelson Heights

High Cold Lake Public

Additional Information

Date Listed June 30th, 2025

Days on Market 3

Zoning Zone 60

DATA IS DEEMED RELIABLE BUT IS NOT GUARANTEED ACCURATE BY THE REALTORS® ASSOCIATION OF EDMONTON. COPYRIGHT 2025 BY THE REALTORS® ASSOCIATION OF EDMONTON. ALL RIGHTS RESERVED. Trademarks are owned or controlled by the Canadian Real Estate Association (CREA) and identify real estate professionals who are members of CREA (REALTOR®, REALTORS®) and/or the quality of services they provide (MLS®, Multiple Listing Service®)

Listing information last updated on July 3rd, 2025 at 8:17am MDT