

\$399,900 - 128 Canary Drive, Rural Athabasca County

MLS® #E4445180

\$399,900

2 Bedroom, 0.50 Bathroom, 821 sqft

Rural on 0.23 Acres

Skeleton Lake, Rural Athabasca County, AB

SKELETON LAKE lakefront Lot in the Summer Village of Mewatha Beach . Do not miss out on this amazing lot to build your dream cabin. This property has an original Cabin with 2 bedrooms, large deck overlooking water, Natural Gas and Power, no water or sewer . Boat House in rough condition and parts of a dock and boat lift. Rare find lakerfront Property

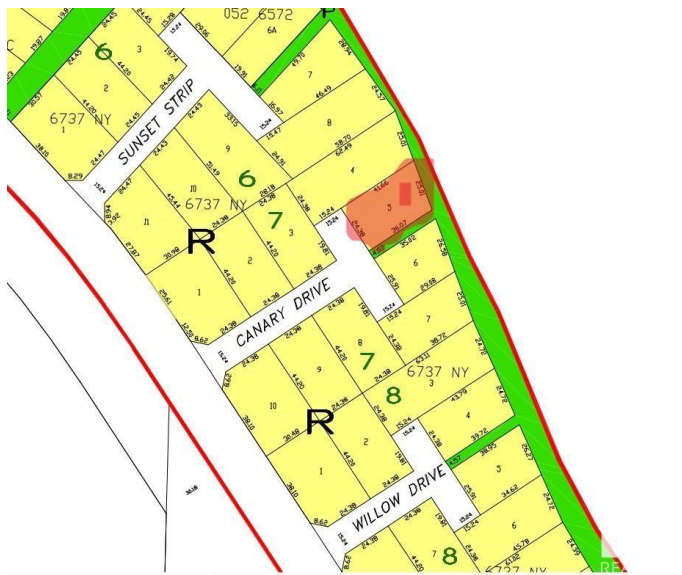
Built in 1968

Essential Information

MLS® #	E4445180
Price	\$399,900
Bedrooms	2
Bathrooms	0.50
Half Baths	1
Square Footage	821
Acres	0.23
Year Built	1968
Type	Rural
Sub-Type	Detached Single Family
Style	Bungalow
Status	Active

Community Information

Address	128 Canary Drive
Area	Rural Athabasca County



Subdivision	Skeleton Lake
City	Rural Athabasca County
County	ALBERTA
Province	AB
Postal Code	T0A 0M0

Amenities

Features	See Remarks
----------	-------------

Interior

Heating	Space Heater, Natural Gas
Stories	1
Has Basement	Yes
Basement	None, No Basement

Exterior

Exterior	Wood
Exterior Features	Private Setting, Treed Lot, Waterfront Property
Construction	Wood
Foundation	Block

Additional Information

Date Listed	June 29th, 2025
Days on Market	19
Zoning	Zone 60

DATA IS DEEMED RELIABLE BUT IS NOT GUARANTEED ACCURATE BY THE REALTORS® ASSOCIATION OF EDMONTON. COPYRIGHT 2025 BY THE REALTORS® ASSOCIATION OF EDMONTON. ALL RIGHTS RESERVED. Trademarks are owned or controlled by the Canadian Real Estate Association (CREA) and identify real estate professionals who are members of CREA (REALTOR®, REALTORS®) and/or the quality of services they provide (MLS®, Multiple Listing Service®)

Listing information last updated on July 18th, 2025 at 8:17pm MDT