

## \$489,997 - 1006 Moyer Drive, Sherwood Park

MLS® #E4445234

**\$489,997**

4 Bedroom, 2.50 Bathroom, 1,280 sqft

Single Family on 0.00 Acres

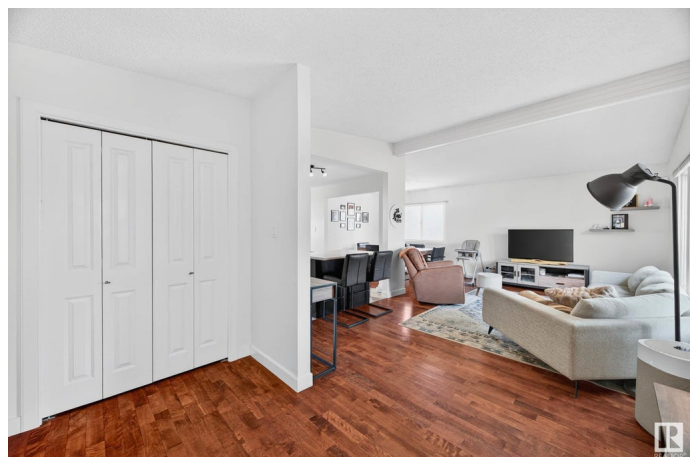
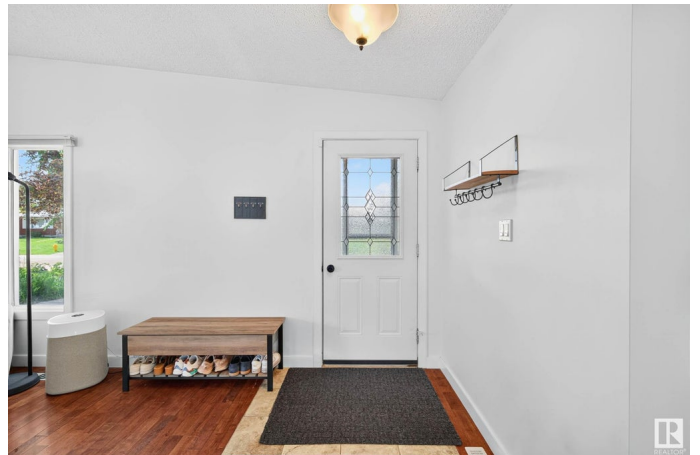
Westboro, Sherwood Park, AB

Welcome Home! This beautiful renovated bungalow boasts a spacious yard and double detached garage with tons of character! Located in the sought after neighborhood of Westboro, this family home is walking distance from two schools, playgrounds, and a large green space. The main living area is bright and spacious with beautiful vaulted ceilings. The kitchen is renovated and opened up to the living and dining rooms with a functional island in the middle. The primary bedroom comes with a half bath ensuite and his/hers closets. The main floor also has two other bedrooms with an updated 5pce bath. The lower level is a fully finished large basement that boasts a beautiful brick feature wall, modern bathroom, another bedroom and an office/storage room. In the backyard is a large grassy area beside the double detached garage, along with a stone patio perfect for dinners outside in the summer evenings!

Built in 1970

### Essential Information

MLS® #	E4445234
Price	\$489,997
Bedrooms	4
Bathrooms	2.50
Full Baths	2



Half Baths	1
Square Footage	1,280
Acres	0.00
Year Built	1970
Type	Single Family
Sub-Type	Detached Single Family
Style	Bungalow
Status	Active

### Community Information

Address	1006 Moyer Drive
Area	Sherwood Park
Subdivision	Westboro
City	Sherwood Park
County	ALBERTA
Province	AB
Postal Code	T8A 1E6

### Amenities

Amenities	Patio
Parking Spaces	5
Parking	Double Garage Detached

### Interior

Interior Features	ensuite bathroom
Appliances	Dishwasher-Built-In, Dryer, Garage Control, Garage Opener, Microwave Hood Fan, Refrigerator, Stove-Electric, Washer, Window Coverings
Heating	Forced Air-1, Natural Gas
Stories	2
Has Basement	Yes
Basement	Full, Finished

### Exterior

Exterior	Wood, Brick, Vinyl
Exterior Features	Fenced, Golf Nearby, Landscaped, Playground Nearby, Public Transportation, Schools, Shopping Nearby
Roof	Asphalt Shingles
Construction	Wood, Brick, Vinyl
Foundation	Concrete Perimeter

**Additional Information**

Date Listed                July 2nd, 2025  
Days on Market        1  
Zoning                    Zone 25

DATA IS DEEMED RELIABLE BUT IS NOT GUARANTEED ACCURATE BY THE REALTORS® ASSOCIATION OF EDMONTON. COPYRIGHT 2025 BY THE REALTORS® ASSOCIATION OF EDMONTON. ALL RIGHTS RESERVED.Trademarks are owned or controlled by the Canadian Real Estate Association (CREA) and identify real estate professionals who are members of CREA (REALTOR®, REALTORS®) and/or the quality of services they provide (MLS®, Multiple Listing Service®)  
Listing information last updated on July 3rd, 2025 at 6:47am MDT