

\$330,000 - 45 2905 141 Street, Edmonton

MLS® #E4445310

\$330,000

3 Bedroom, 2.50 Bathroom, 1,475 sqft

Condo / Townhouse on 0.00 Acres

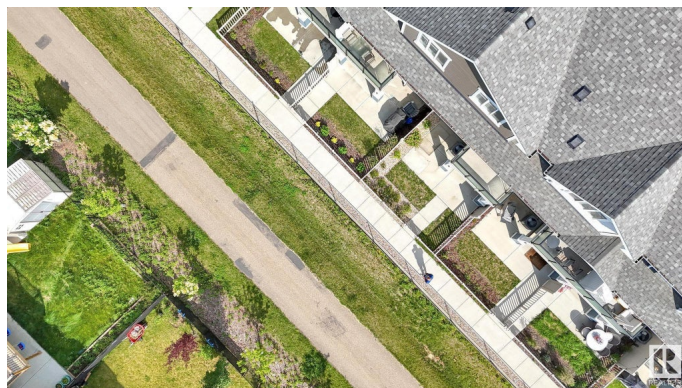
Chappelle Area, Edmonton, AB

Beautiful 3-bedroom + den, 2.5-bath townhome with a double attached garage in Chappelle, built by Brookfield and lovingly maintained by its original owner. One of the best locations in the complex, this south-facing unit fronts a walking path and offers a bright yard and patio. The main floor flex space is ideal for a home office or gym. Quartz countertops and thoughtful layout provide comfort and style at a fantastic price. Enjoy access to Chappelle Gardens' amenities, including a skating rink, splash park, pickleball and basketball courts, gym, gardens, and more. Walk to stores, restaurants, and schools. Pet-friendly and low condo fees that cover exterior maintenance. Do not miss this move-in-ready gem!

Built in 2020

Essential Information

MLS® #	E4445310
Price	\$330,000
Bedrooms	3
Bathrooms	2.50
Full Baths	2
Half Baths	1
Square Footage	1,475
Acres	0.00



Year Built	2020
Type	Condo / Townhouse
Sub-Type	Townhouse
Style	3 Storey
Status	Active

Community Information

Address	45 2905 141 Street
Area	Edmonton
Subdivision	Chappelle Area
City	Edmonton
County	ALBERTA
Province	AB
Postal Code	T6W 3M4

Amenities

Amenities	Patio
Parking	Double Garage Attached

Interior

Interior Features	ensuite bathroom
Appliances	Dishwasher-Built-In, Dryer, Microwave Hood Fan, Refrigerator, Stove-Electric, Washer
Heating	Forced Air-1, Natural Gas
Stories	3
Has Basement	Yes
Basement	None, No Basement

Exterior

Exterior	Wood, Vinyl
Exterior Features	Airport Nearby, Landscaped, Schools, Shopping Nearby
Roof	Asphalt Shingles
Construction	Wood, Vinyl
Foundation	Concrete Perimeter

Additional Information

Date Listed	July 2nd, 2025
Days on Market	1
Zoning	Zone 55

HOA Fees	426
HOA Fees Freq.	Annually
Condo Fee	\$246

DATA IS DEEMED RELIABLE BUT IS NOT GUARANTEED ACCURATE BY THE REALTORS® ASSOCIATION OF EDMONTON. COPYRIGHT 2025 BY THE REALTORS® ASSOCIATION OF EDMONTON. ALL RIGHTS RESERVED. Trademarks are owned or controlled by the Canadian Real Estate Association (CREA) and identify real estate professionals who are members of CREA (REALTOR®, REALTORS®) and/or the quality of services they provide (MLS®, Multiple Listing Service®)

Listing information last updated on July 3rd, 2025 at 5:33pm MDT