

\$469,000 - 9851 79 Avenue, Edmonton

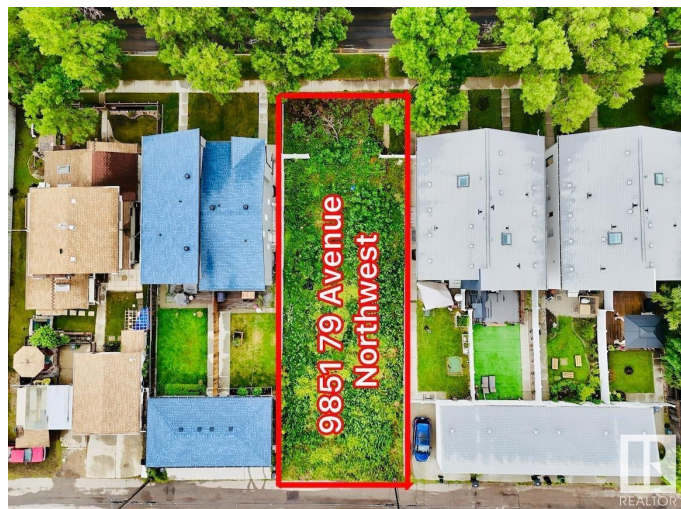
MLS® #E4446512

\$469,000

0 Bedroom, 0.00 Bathroom,
Single Family on 0.00 Acres

Ritchie, Edmonton, AB

Outstanding Investment Opportunity in the Heart of Ritchie! This 44' x 130' RF3 zoned lot (approx. 5,800 sq. ft.) offers incredible potential in one of Edmonton's most sought-after southside communities. Perfectly situated just steps from vibrant Whyte Avenue and scenic ravine trails, this property combines urban convenience with natural beauty. RF3 zoning allows for Detached, Semi-Detached, or Multi-Unit Residential development. A rare find in a prime location—ideal for builders, investors, or anyone looking to create something special. Don't miss your chance to own in Ritchie!



Essential Information

| | |
|-----------|-----------------|
| MLS® # | E4446512 |
| Price | \$469,000 |
| Bathrooms | 0.00 |
| Acres | 0.00 |
| Type | Single Family |
| Sub-Type | Vacant Lot/Land |
| Status | Active |

Community Information

| | |
|-------------|----------------|
| Address | 9851 79 Avenue |
| Area | Edmonton |
| Subdivision | Ritchie |

| | |
|-------------|----------|
| City | Edmonton |
| County | ALBERTA |
| Province | AB |
| Postal Code | T6E 1R2 |

Exterior

| | |
|-------------------|--|
| Exterior Features | Back Lane, Commercial, Park/Reserve, Public Transportation, Shopping Nearby, See Remarks |
|-------------------|--|

Additional Information

| | |
|----------------|----------------|
| Date Listed | July 7th, 2025 |
| Days on Market | 4 |
| Zoning | Zone 17 |

DATA IS DEEMED RELIABLE BUT IS NOT GUARANTEED ACCURATE BY THE REALTORS® ASSOCIATION OF EDMONTON. COPYRIGHT 2025 BY THE REALTORS® ASSOCIATION OF EDMONTON. ALL RIGHTS RESERVED. Trademarks are owned or controlled by the Canadian Real Estate Association (CREA) and identify real estate professionals who are members of CREA (REALTOR®, REALTORS®) and/or the quality of services they provide (MLS®, Multiple Listing Service®)

Listing information last updated on July 11th, 2025 at 7:02pm MDT