

\$499,999 - 2152 Maple Road, Edmonton

MLS® #E4446733

\$499,999

5 Bedroom, 3.50 Bathroom, 1,509 sqft
Single Family on 0.00 Acres

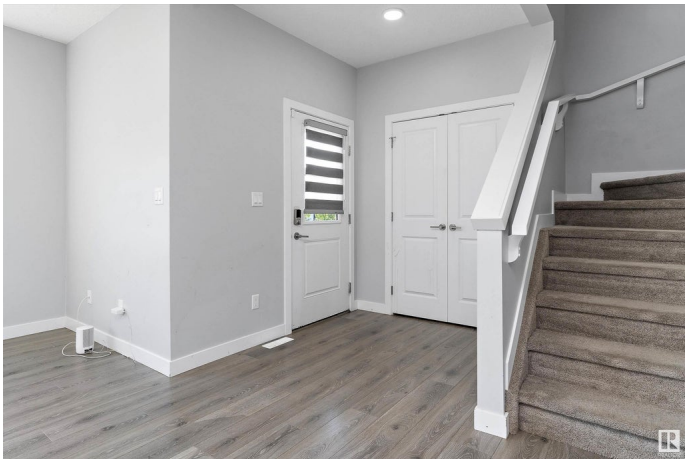
Maple Crest, Edmonton, AB

First time home buyer's and Investors are welcome to this FORMER SHOWHOME in most desired community of Maple Crest. This house features 5 bedrooms and 3.5 washrooms. Upon entrance you will find spacious Livingroom with big window and open concept kitchen. Upstairs you have Master bedroom with \$ piece ensuite and walk in closet. you will also find 2 spacious bedrooms, full washroom and laundry. Fully finished 2 BEDROOM BASEMENT has SEPRATE SIDE ENTRY with Second Kitchen and laundry. House is fully landscaped, includes DECK and has central AIR-CONDITIONING. Walking distance to Walmart, superstore. home depot, bus stop and all other basic amenities.

Built in 2020

Essential Information

| | |
|----------------|-----------|
| MLS® # | E4446733 |
| Price | \$499,999 |
| Bedrooms | 5 |
| Bathrooms | 3.50 |
| Full Baths | 3 |
| Half Baths | 1 |
| Square Footage | 1,509 |
| Acres | 0.00 |



| | |
|------------|---------------|
| Year Built | 2020 |
| Type | Single Family |
| Sub-Type | Half Duplex |
| Style | 2 Storey |
| Status | Active |

Community Information

| | |
|-------------|-----------------|
| Address | 2152 Maple Road |
| Area | Edmonton |
| Subdivision | Maple Crest |
| City | Edmonton |
| County | ALBERTA |
| Province | AB |
| Postal Code | T6T 2L4 |

Amenities

| | |
|-----------|--|
| Amenities | Air Conditioner, Ceiling 9 ft., Deck, Detectors Smoke, No Animal Home, No Smoking Home |
| Parking | Double Garage Detached |

Interior

| | |
|-------------------|---|
| Interior Features | ensuite bathroom |
| Appliances | Air Conditioning-Central, Dishwasher-Built-In, Garage Opener, Microwave Hood Fan, Window Coverings, Dryer-Two, Refrigerators-Two, Stoves-Two, Washers-Two |
| Heating | Forced Air-1, Natural Gas |
| Stories | 3 |
| Has Basement | Yes |
| Basement | Full, Finished |

Exterior

| | |
|-------------------|--|
| Exterior | Wood, Vinyl |
| Exterior Features | Back Lane, Landscaped, Playground Nearby, Public Transportation, See Remarks |
| Roof | Asphalt Shingles |
| Construction | Wood, Vinyl |
| Foundation | Concrete Perimeter |

Additional Information

| | |
|-------------|----------------|
| Date Listed | July 9th, 2025 |
|-------------|----------------|

Days on Market 3

Zoning Zone 30

DATA IS DEEMED RELIABLE BUT IS NOT GUARANTEED ACCURATE BY THE REALTORS® ASSOCIATION OF EDMONTON. COPYRIGHT 2025 BY THE REALTORS® ASSOCIATION OF EDMONTON. ALL RIGHTS RESERVED. Trademarks are owned or controlled by the Canadian Real Estate Association (CREA) and identify real estate professionals who are members of CREA (REALTOR®, REALTORS®) and/or the quality of services they provide (MLS®, Multiple Listing Service®)

Listing information last updated on July 12th, 2025 at 1:17am MDT