

## \$385,000 - 25 16415 77 Street, Edmonton

MLS® #E4446887

**\$385,000**

3 Bedroom, 3.00 Bathroom, 1,122 sqft  
Condo / Townhouse on 0.00 Acres

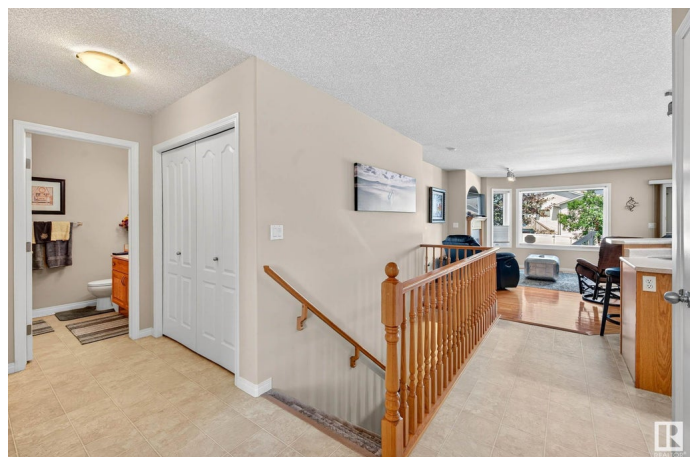
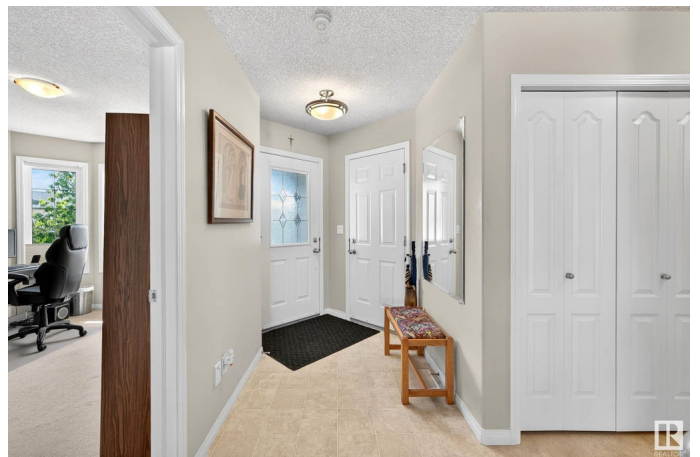
Mayliewan, Edmonton, AB

Welcome to this beautifully half duplex bungalow in a quiet, adult-only community! With a heated double attached garage with floor drain and lovely curb appeal, this bright, open-concept home features large windows and hardwood flooring. The sunny kitchen offers ample cabinetry, a central island, and a walk in pantry. Enjoy cozy evenings by the gas fireplace in the living room, or step out to the deck for some fresh air. The primary suite includes a walk-in closet and full ensuite. A second bedroom or office, another full bath, and laundry complete the main floor. The basement offers a large flexible space, ideal for a hobby room, gym, or music studio plus an additional bedroom and third full bath. Plenty of storage in the utility room where you'll also find the new furnace and hot water tank. This well-cared-for home is located close to parks, walking trails, shopping, and transit. Ideal for downsizers, this move-in-ready gem offers comfort, space, and convenience in a highly sought after complex.

Built in 2002

### Essential Information

MLS® #	E4446887
Price	\$385,000
Bedrooms	3



Bathrooms	3.00
Full Baths	3
Square Footage	1,122
Acres	0.00
Year Built	2002
Type	Condo / Townhouse
Sub-Type	Half Duplex
Style	Bungalow
Status	Active

### Community Information

Address	25 16415 77 Street
Area	Edmonton
Subdivision	Mayliewan
City	Edmonton
County	ALBERTA
Province	AB
Postal Code	T5Z 3S8

### Amenities

Amenities	Deck, No Animal Home, No Smoking Home, Parking-Visitor
Parking Spaces	3
Parking	Double Garage Attached

### Interior

Interior Features	ensuite bathroom
Appliances	Dishwasher-Built-In, Dryer, Garage Control, Garage Opener, Refrigerator, Stove-Electric, Washer
Heating	Forced Air-1, Natural Gas
Fireplace	Yes
Fireplaces	Mantel
Stories	1
Has Basement	Yes
Basement	Full, Partially Finished

### Exterior

Exterior	Wood, Brick, Vinyl
Exterior Features	Backs Onto Park/Trees, Cul-De-Sac, Landscaped, Low Maintenance Landscape, No Back Lane, No Through Road, Not Fenced, Private

	Setting, Public Transportation, Shopping Nearby
Roof	Asphalt Shingles
Construction	Wood, Brick, Vinyl
Foundation	Concrete Perimeter

### **Additional Information**

Date Listed	July 10th, 2025
Days on Market	2
Zoning	Zone 28
Condo Fee	\$152

DATA IS DEEMED RELIABLE BUT IS NOT GUARANTEED ACCURATE BY THE REALTORS® ASSOCIATION OF EDMONTON. COPYRIGHT 2025 BY THE REALTORS® ASSOCIATION OF EDMONTON. ALL RIGHTS RESERVED. Trademarks are owned or controlled by the Canadian Real Estate Association (CREA) and identify real estate professionals who are members of CREA (REALTOR®, REALTORS®) and/or the quality of services they provide (MLS®, Multiple Listing Service®)

Listing information last updated on July 12th, 2025 at 1:02pm MDT