

\$137,000 - 219 2323 119 Street, Edmonton

MLS® #E4446922

\$137,000

2 Bedroom, 1.00 Bathroom, 839 sqft

Condo / Townhouse on 0.00 Acres

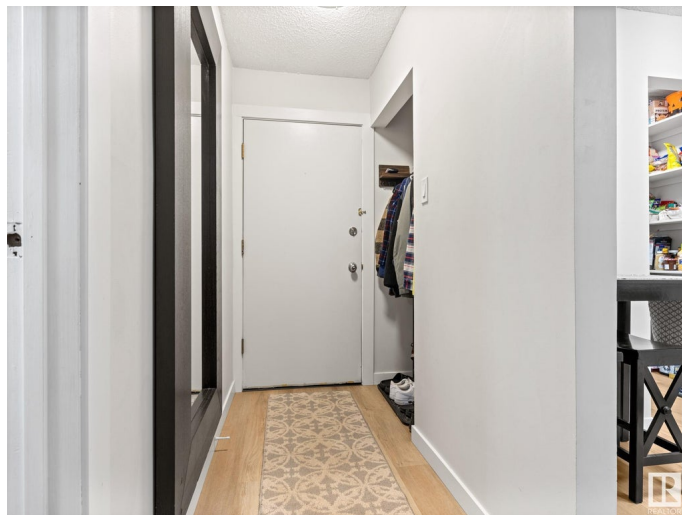
Blue Quill, Edmonton, AB

~ CUTE 2 BEDROOM, 1 BATH CONDO ~
LOCATED in the AMAZING COMMUNITY of
BLUE QUILL ~ SECOND FLOOR UNIT ~
Check out this amazing 2 bedroom unit in
FEATHERSTONE VILLAGE ~ IN-SUITE SIDE
BY SIDE WASHER & DRYER ~ Newer paint
and flooring ~ LARGE BALCONY with
STORAGE ROOM ~ PARKING STALL close
to building with a plug in for your vehicle ~
Very well kept unit that is in move in ready
condition ~ Located close to Whitemud Drive,
Anthony Henday, Shopping and Public
Transportation ~ Perfect for students, retirees
or couples ~ Hurry before this one is gone !!!

Built in 1977

Essential Information

MLS® #	E4446922
Price	\$137,000
Bedrooms	2
Bathrooms	1.00
Full Baths	1
Square Footage	839
Acres	0.00
Year Built	1977
Type	Condo / Townhouse
Sub-Type	Lowrise Apartment
Style	Single Level Apartment



Status	Active
--------	--------

Community Information

Address	219 2323 119 Street
Area	Edmonton
Subdivision	Blue Quill
City	Edmonton
County	ALBERTA
Province	AB
Postal Code	T6J 4E2

Amenities

Amenities	Detectors Smoke, Intercom, No Smoking Home, Parking-Plug-Ins, Parking-Visitor, Security Door, Television Connection
Parking	Stall

Interior

Appliances	Dishwasher-Built-In, Dryer, Refrigerator, Stove-Electric, Washer, Window Coverings
Heating	Baseboard, Natural Gas
# of Stories	3
Stories	1
Has Basement	Yes
Basement	None, No Basement

Exterior

Exterior	Wood
Exterior Features	Airport Nearby, Corner Lot, Flat Site, Golf Nearby, Landscaped, No Back Lane, No Through Road, Not Fenced, Playground Nearby, Public Swimming Pool, Public Transportation, Schools, Shopping Nearby
Roof	Asphalt Shingles
Construction	Wood
Foundation	Concrete Perimeter

Additional Information

Date Listed	July 10th, 2025
Days on Market	2
Zoning	Zone 16
Condo Fee	\$566

DATA IS DEEMED RELIABLE BUT IS NOT GUARANTEED ACCURATE BY THE REALTORS® ASSOCIATION OF

EDMONTON. COPYRIGHT 2025 BY THE REALTORS® ASSOCIATION OF EDMONTON. ALL RIGHTS RESERVED.Trademarks are owned or controlled by the Canadian Real Estate Association (CREA) and identify real estate professionals who are members of CREA (REALTOR®, REALTORS®) and/or the quality of services they provide (MLS®, Multiple Listing Service®)

Listing information last updated on July 12th, 2025 at 5:17pm MDT