

\$225,000 - #3 55209 Rr 35, Rural Lac Ste. Anne County

MLS® #E4447000

\$225,000

0 Bedroom, 0.00 Bathroom,
Rural on 40.03 Acres

None, Rural Lac Ste. Anne County, AB

AMAZING VALUE. Dream property one mile away from Lac St. Anne Lake. 40.03 acres mostly treed very private. Parcel already has a gate and driveway development. Great location close to highway 43 and Ross Haven. Build a cabin , build a house or make a recreational area. Close to the lake which has great all year round fishing.

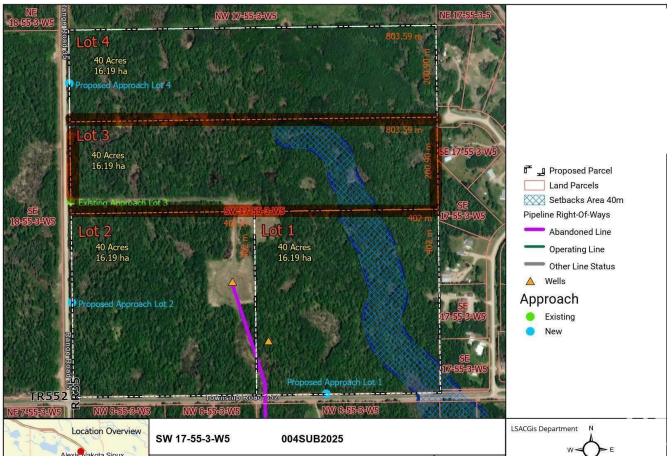
Essential Information

MLS® #	E4447000
Price	\$225,000
Bathrooms	0.00
Acres	40.03
Type	Rural
Sub-Type	Vacant Lot/Land
Status	Active

Community Information

Address	#3 55209 Rr 35
Area	Rural Lac Ste. Anne County
Subdivision	None
City	Rural Lac Ste. Anne County
County	ALBERTA
Province	AB
Postal Code	T0E 1A0

Exterior



Exterior Features Boating, Private Setting, Treed Lot

Additional Information

Date Listed July 10th, 2025
Days on Market 3
Zoning Zone 70

DATA IS DEEMED RELIABLE BUT IS NOT GUARANTEED ACCURATE BY THE REALTORS® ASSOCIATION OF EDMONTON. COPYRIGHT 2025 BY THE REALTORS® ASSOCIATION OF EDMONTON. ALL RIGHTS RESERVED.Trademarks are owned or controlled by the Canadian Real Estate Association (CREA) and identify real estate professionals who are members of CREA (REALTOR®, REALTORS®) and/or the quality of services they provide (MLS®, Multiple Listing Service®)
Listing information last updated on July 12th, 2025 at 10:17pm MDT