

\$699,888 - 2709 62 Ave, Rural Leduc County

MLS® #E4447051

\$699,888

4 Bedroom, 3.00 Bathroom, 2,327 sqft

Rural on 0.12 Acres

Churchill Meadow, Rural Leduc County, AB

Upgraded 4-Bedroom Home with Spice

Kitchen in Churchill Meadows, Leduc

Welcome to this beautifully maintained 2,300+ sq ft home located in the desirable community.

Designed with both style and functionality in

mind, this upgraded home is perfect for

families and multi-generational living. 4

spacious bedrooms & 3 full bathrooms â€”

including a main floor bedroom and full bath

Gourmet kitchen with high-end finishes and

brand-new LG appliances (5-year warranty)

SPICE kitchen â€” perfect for culinary

enthusiasts Electric fireplace and automated

window blinds for added comfort.

Maintenance-free deck with railings.

Unfinished basement with SEPARATE SIDE

ENTRANCE â€” ready for a future in-law suite

or legal basement suite (income

potential) Located in a family-friendly

neighborhood close to parks, schools, and

major commuter routes, this move-in-ready

home combines luxury, practicality, and

investment.

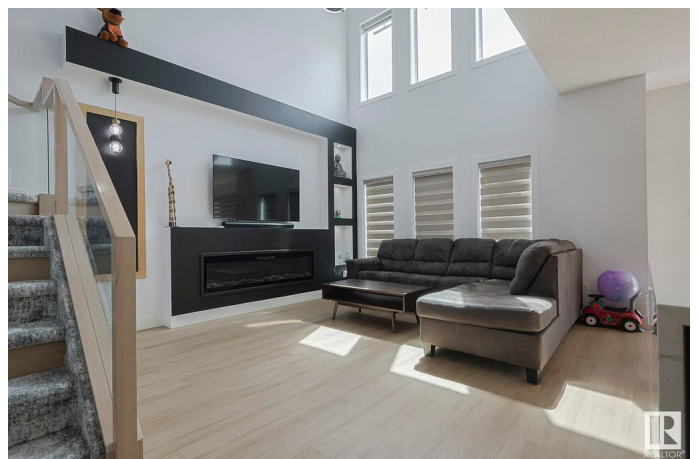
Built in 2023

Essential Information

MLS® # E4447051

Price \$699,888

Bedrooms 4



Bathrooms	3.00
Full Baths	3
Square Footage	2,327
Acres	0.12
Year Built	2023
Type	Rural
Sub-Type	Detached Single Family
Style	2 Storey
Status	Active

Community Information

Address	2709 62 Ave
Area	Rural Leduc County
Subdivision	Churchill Meadow
City	Rural Leduc County
County	ALBERTA
Province	AB
Postal Code	T4X 3A5

Amenities

Features	Ceiling 10 ft., Deck, Detectors Smoke, Hot Water Electric, No Animal Home, No Smoking Home
----------	--

Interior

Interior Features	ensuite bathroom
Heating	Forced Air-1, Natural Gas
Fireplace	Yes
Stories	2
Has Basement	Yes
Basement	Full, Unfinished

Exterior

Exterior	Wood
Exterior Features	Airport Nearby, Golf Nearby, No Back Lane, Playground Nearby, Shopping Nearby
Construction	Wood
Foundation	Concrete Perimeter

Additional Information

Date Listed July 10th, 2025

Days on Market 3

Zoning Zone 80

DATA IS DEEMED RELIABLE BUT IS NOT GUARANTEED ACCURATE BY THE REALTORS® ASSOCIATION OF EDMONTON. COPYRIGHT 2025 BY THE REALTORS® ASSOCIATION OF EDMONTON. ALL RIGHTS RESERVED. Trademarks are owned or controlled by the Canadian Real Estate Association (CREA) and identify real estate professionals who are members of CREA (REALTOR®, REALTORS®) and/or the quality of services they provide (MLS®, Multiple Listing Service®)

Listing information last updated on July 13th, 2025 at 4:32am MDT