

## \$499,900 - 2018 Garnett Way, Edmonton

MLS® #E4447516

**\$499,900**

3 Bedroom, 2.50 Bathroom, 1,306 sqft

Single Family on 0.00 Acres

Glastonbury, Edmonton, AB

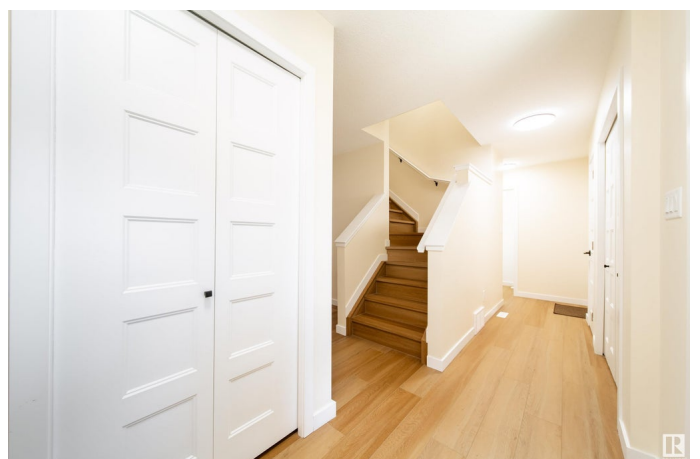
Fully Renovated Family Home in The Grange! This stunning two-storey home, completely renovated in 2024 with all brand new installations, is nestled in the heart of the family-friendly Grange neighborhood. It boasts a functional layout with 3 bed & 2.5 baths. The main floor features new flooring throughout with a spacious living room, expansive window that floods the space with natural light. The adjacent open-concept kitchen and dining room are entirely new, with a patio door leading to a spectacular, massive deck and a backyard with fruit trees. You'll also find ample closet and storage space in the main floor hallway, along with a convenient new half bath. Upstairs, the master bedroom is featuring a truly spacious new 4-piece ensuite bathroom, a walk-in closet, and an additional linen closet. The fully finished basement, complete with new carpets, offers a versatile family space, plus a dedicated laundry room. The double attached garage is drywalled and insulated. Enjoy the convenience of parks and lakes.

Built in 2002

### Essential Information

MLS® # E4447516

Price \$499,900



Bedrooms	3
Bathrooms	2.50
Full Baths	2
Half Baths	1
Square Footage	1,306
Acres	0.00
Year Built	2002
Type	Single Family
Sub-Type	Detached Single Family
Style	2 Storey
Status	Active

### Community Information

Address	2018 Garnett Way
Area	Edmonton
Subdivision	Glastonbury
City	Edmonton
County	ALBERTA
Province	AB
Postal Code	T5T 6R1

### Amenities

Amenities	Deck
Parking Spaces	4
Parking	Double Garage Attached

### Interior

Interior Features	ensuite bathroom
Appliances	Dishwasher-Built-In, Dryer, Garage Control, Garage Opener, Microwave Hood Fan, Refrigerator, Stove-Electric, Vacuum Systems, Washer
Heating	Forced Air-1, Natural Gas
Stories	3
Has Basement	Yes
Basement	Full, Finished

### Exterior

Exterior	Wood, Vinyl
Exterior Features	Fenced, Fruit Trees/Shrubs, No Back Lane
Roof	Asphalt Shingles

Construction	Wood, Vinyl
Foundation	Concrete Perimeter

**Additional Information**

Date Listed	July 13th, 2025
Days on Market	2
Zoning	Zone 58

DATA IS DEEMED RELIABLE BUT IS NOT GUARANTEED ACCURATE BY THE REALTORS® ASSOCIATION OF EDMONTON. COPYRIGHT 2025 BY THE REALTORS® ASSOCIATION OF EDMONTON. ALL RIGHTS RESERVED.Trademarks are owned or controlled by the Canadian Real Estate Association (CREA) and identify real estate professionals who are members of CREA (REALTOR®, REALTORS®) and/or the quality of services they provide (MLS®, Multiple Listing Service®)

Listing information last updated on July 14th, 2025 at 10:32pm MDT