

\$159,000 - 217 18012 95 Avenue, Edmonton

MLS® #E4447692

\$159,000

2 Bedroom, 2.00 Bathroom, 1,019 sqft

Condo / Townhouse on 0.00 Acres

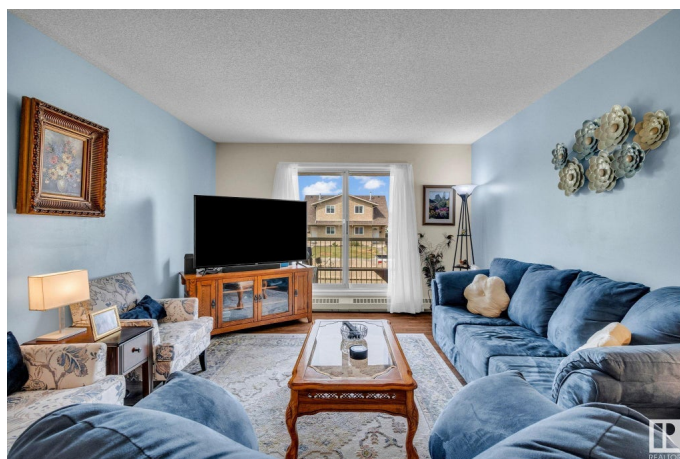
La Perle, Edmonton, AB

This desirable 2 bedroom, 2 full bath just minutes walk to WEM. You'll appreciate the primary bedroom with his & hers closets and a full 4 pce. ensuite. The 2nd bedroom is located next to another 4 pce. bathroom! perfect for guests. The living area & dining area are a generous size. There is even a large storage room in the unit with full size washer & dryer. Your energized parking spot is located right below your unit. This 55 plus adult building has lots to offer including an indoor pool, hot tub, sauna, fitness centre, library & social room. Public transit is located right out the front door & restaurants, shops, amenities & services are all nearby. This well managed building has new windows, patio doors, an on-site manager & lots of visitor parking.

Built in 1990

Essential Information

| | |
|----------------|-----------|
| MLS® # | E4447692 |
| Price | \$159,000 |
| Bedrooms | 2 |
| Bathrooms | 2.00 |
| Full Baths | 2 |
| Square Footage | 1,019 |
| Acres | 0.00 |
| Year Built | 1990 |



| | |
|----------|------------------------|
| Type | Condo / Townhouse |
| Sub-Type | Lowrise Apartment |
| Style | Single Level Apartment |
| Status | Active |

Community Information

| | |
|-------------|---------------------|
| Address | 217 18012 95 Avenue |
| Area | Edmonton |
| Subdivision | La Perle |
| City | Edmonton |
| County | ALBERTA |
| Province | AB |
| Postal Code | T5T 5Z2 |

Amenities

| | |
|-----------|--|
| Amenities | Exercise Room, Parking-Visitor, Pool-Indoor, Sauna; Swirlpool; Steam |
| Parking | Stall |
| Has Pool | Yes |

Interior

| | |
|-------------------|--|
| Interior Features | ensuite bathroom |
| Appliances | Dishwasher-Built-In, Dryer, Refrigerator, Stove-Electric, Washer, Window Coverings |
| Heating | Hot Water, Natural Gas |
| # of Stories | 4 |
| Stories | 1 |
| Has Basement | Yes |
| Basement | None, No Basement |

Exterior

| | |
|-------------------|---|
| Exterior | Wood, Stucco |
| Exterior Features | Fenced, Landscaped, Public Transportation |
| Roof | Asphalt Shingles |
| Construction | Wood, Stucco |
| Foundation | Concrete Perimeter |

Additional Information

| | |
|----------------|-----------------|
| Date Listed | July 14th, 2025 |
| Days on Market | 62 |

| | |
|-----------|---------|
| Zoning | Zone 20 |
| Condo Fee | \$551 |

DATA IS DEEMED RELIABLE BUT IS NOT GUARANTEED ACCURATE BY THE REALTORS® ASSOCIATION OF EDMONTON. COPYRIGHT 2025 BY THE REALTORS® ASSOCIATION OF EDMONTON. ALL RIGHTS RESERVED. Trademarks are owned or controlled by the Canadian Real Estate Association (CREA) and identify real estate professionals who are members of CREA (REALTOR®, REALTORS®) and/or the quality of services they provide (MLS®, Multiple Listing Service®)

Listing information last updated on September 14th, 2025 at 1:47am MDT