

\$2,600 - 2024 35a Avenue, Edmonton

MLS® #E4448369

\$2,600

5 Bedroom, 3.00 Bathroom, 1,044 sqft

Rental on 0.00 Acres

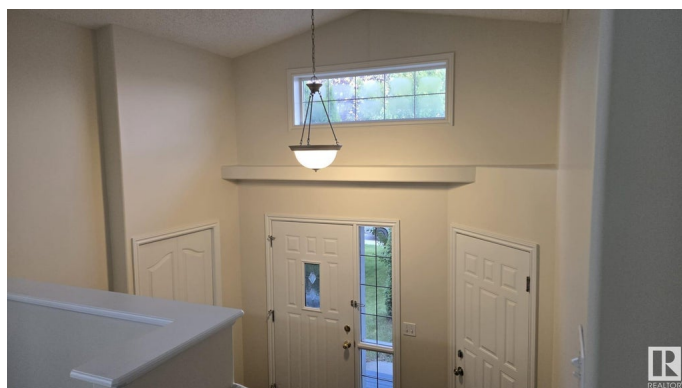
Wild Rose, Edmonton, AB

Available August 1st! Located in the family-friendly community of Wildrose, this well-kept bilevel detached home offers comfort, space, and convenience. Featuring a double attached garage and a paved driveway, this pet-free home boasts a functional layout with a bright main floor and a fully finished basement—ideal for additional living, work, or entertainment space. The property is move-in ready and situated on a quiet street with quick access to Whitemud Drive and Anthony Henday for easy commuting. Nearby amenities include schools, parks, grocery stores, restaurants, and transit, all just minutes away. With ample natural light, and generous room sizes this home is perfect for families or professionals seeking a clean, quiet, and connected lifestyle. Don't miss the opportunity to live in one of SE Edmonton's most desirable neighborhoods

Built in 2003

Essential Information

MLS® #	E4448369
Price	\$2,600
Bedrooms	5
Bathrooms	3.00
Full Baths	3



Square Footage	1,044
Acres	0.00
Year Built	2003
Type	Rental
Style	Bi-Level
Status	Active

Community Information

Address	2024 35a Avenue
Area	Edmonton
Subdivision	Wild Rose
City	Edmonton
County	ALBERTA
Province	AB
Postal Code	T6T 1Y2

Amenities

Parking	Double Garage Attached
---------	------------------------

Interior

Appliances	Dishwasher-Built-In, Dryer, Oven-Microwave, Refrigerator, Stove-Electric, Washer
------------	--

Additional Information

Date Listed	July 17th, 2025
Days on Market	10
Zoning	Zone 30

DATA IS DEEMED RELIABLE BUT IS NOT GUARANTEED ACCURATE BY THE REALTORS® ASSOCIATION OF EDMONTON. COPYRIGHT 2025 BY THE REALTORS® ASSOCIATION OF EDMONTON. ALL RIGHTS RESERVED. Trademarks are owned or controlled by the Canadian Real Estate Association (CREA) and identify real estate professionals who are members of CREA (REALTOR®, REALTORS®) and/or the quality of services they provide (MLS®, Multiple Listing Service®)

Listing information last updated on July 27th, 2025 at 8:17am MDT