

\$289,000 - 510 4835 104 A Street, Edmonton

MLS® #E4448549

\$289,000

2 Bedroom, 2.00 Bathroom, 1,001 sqft

Condo / Townhouse on 0.00 Acres

Empire Park, Edmonton, AB

Welcome to your elevated urban retreat! This stunning top-floor condo offers over 1000 sqft of beautifully designed living space with soaring 10-ft ceilings and an open-concept layout that instantly feels expansive and bright. Featuring 2 spacious bedrooms, 2 full bathrooms, and 2 underground parking stalls, comfort and convenience are at your fingertips. Step inside and be greeted by unobstructed views, thanks to the full wall of windows that flood the kitchen, dining, and living area with natural light. The sleek kitchen flows effortlessly into the dining space, perfect for hosting or relaxing. A private balcony invites you to unwind outdoors or cultivate your own mini garden sanctuary. The location is unbeatable—walk to the Italian Centre, grocery stores, and charming neighborhood restaurants. Easily accessible to downtown, the University of Alberta, and the airport. A rare find where elegance meets everyday practicality. Live above it all! Step into your next chapter!

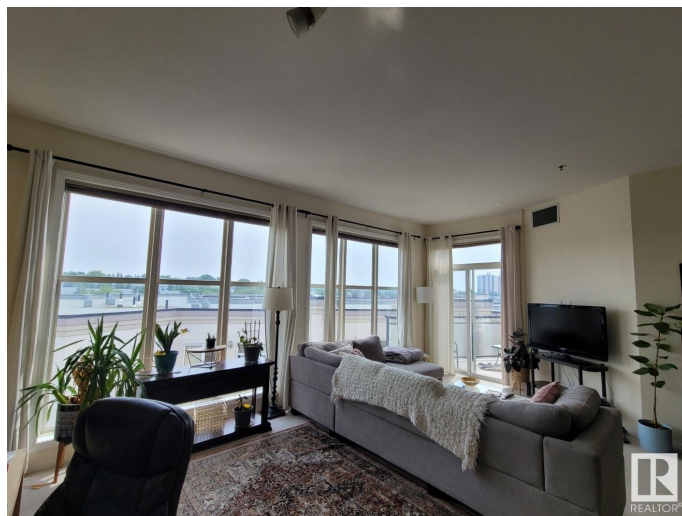
Built in 2005

Essential Information

MLS® # E4448549

Price \$289,000

Bedrooms 2



Bathrooms	2.00
Full Baths	2
Square Footage	1,001
Acres	0.00
Year Built	2005
Type	Condo / Townhouse
Sub-Type	Lowrise Apartment
Style	Single Level Apartment
Status	Active

Community Information

Address	510 4835 104 A Street
Area	Edmonton
Subdivision	Empire Park
City	Edmonton
County	ALBERTA
Province	AB
Postal Code	T6H 0R5

Amenities

Amenities	Ceiling 10 ft., Closet Organizers, Deck, Intercom, No Animal Home, Parking-Visitor, Secured Parking, Security Door, Storage-In-Suite, Vinyl Windows
Parking Spaces	2
Parking	Underground

Interior

Interior Features	ensuite bathroom
Appliances	Dryer, Oven-Built-In, Refrigerator, Washer, Window Coverings
Heating	Forced Air-1, Natural Gas
# of Stories	5
Stories	1
Has Basement	Yes
Basement	None, No Basement

Exterior

Exterior	Wood, Stucco
Exterior Features	Golf Nearby, Private Setting, Public Transportation, Schools, Shopping Nearby

Roof	Roll Roofing
Construction	Wood, Stucco
Foundation	Concrete Perimeter

Additional Information

Date Listed	July 18th, 2025
Days on Market	9
Zoning	Zone 15
Condo Fee	\$412



DATA IS DEEMED RELIABLE BUT IS NOT GUARANTEED ACCURATE BY THE REALTORS® ASSOCIATION OF EDMONTON. COPYRIGHT 2025 BY THE REALTORS® ASSOCIATION OF EDMONTON. ALL RIGHTS RESERVED. Trademarks are owned or controlled by the Canadian Real Estate Association (CREA) and identify real estate professionals who are members of CREA (REALTOR®, REALTORS®) and/or the quality of services they provide (MLS®, Multiple Listing Service®)

Listing information last updated on July 27th, 2025 at 4:17pm MDT