

## \$234,900 - 110 5404 7 Avenue, Edmonton

MLS® #E4448568

**\$234,900**

2 Bedroom, 2.00 Bathroom, 1,022 sqft

Condo / Townhouse on 0.00 Acres

Charlesworth, Edmonton, AB

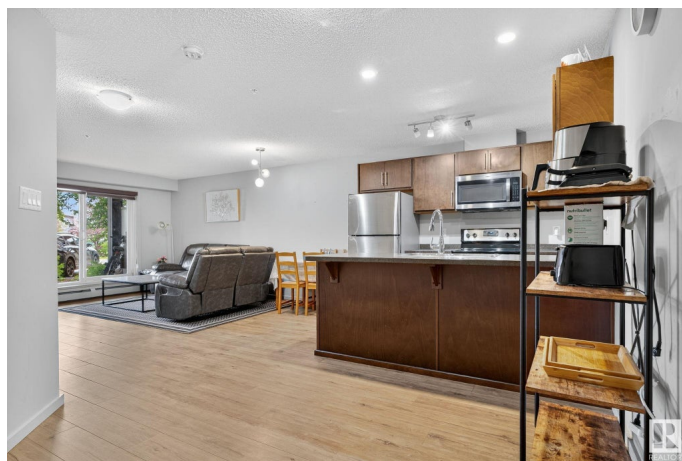
Step into this bright and impeccably maintained MAIN FLOOR unit in the sought-after Elements at Willowhaven featuring OVER 1000 SQFT. Proudly cared for by the owner, this spacious 2-bedroom, 2-bathroom condo offers 1021 sq ft of thoughtfully designed, open-concept living. At the heart of the home is a modern kitchen with , stainless steel appliances, and plenty of cabinetry perfect for both daily meals and hosting. The living and dining area showcase natural sunlight thanks to the west-facing exposure and flow seamlessly onto a private balcony for added outdoor enjoyment. The primary bedroom offers a beautiful ensuite and generous closet space. A second bedroom and full bathroom are conveniently positioned on the opposite side of the unit, offering excellent privacy for guests or roommates. Additional highlights include in-suite laundry, TWO PARKING STALLS including one underground and one surface stall. Situated in the vibrant community of Charlesworth. Located close to shopping and all amenities

Built in 2018

### Essential Information

MLS® # E4448568

Price \$234,900



Bedrooms	2
Bathrooms	2.00
Full Baths	2
Square Footage	1,022
Acres	0.00
Year Built	2018
Type	Condo / Townhouse
Sub-Type	Lowrise Apartment
Style	Single Level Apartment
Status	Active

### Community Information

Address	110 5404 7 Avenue
Area	Edmonton
Subdivision	Charlesworth
City	Edmonton
County	ALBERTA
Province	AB
Postal Code	T6K 2K4

### Amenities

Amenities	On Street Parking, No Animal Home, No Smoking Home, Parking-Visitor, Patio
Parking	Heated, Parkade, Underground

### Interior

Interior Features	ensuite bathroom
Appliances	Dishwasher-Built-In, Dryer, Oven-Microwave, Refrigerator, Stove-Electric, Washer, Window Coverings
Heating	Baseboard, Natural Gas
# of Stories	4
Stories	4
Has Basement	Yes
Basement	None, No Basement

### Exterior

Exterior	Wood, Stone, Vinyl
Exterior Features	Airport Nearby, Flat Site, Golf Nearby, Landscaped, Playground Nearby, Schools, Shopping Nearby, See Remarks

Roof	See Remarks
Construction	Wood, Stone, Vinyl
Foundation	See Remarks

### School Information

Elementary	Ellerslie Campus Shool
Middle	Ellerslie Campus Shool
High	Elder Dr Francis

### Additional Information

Date Listed	July 18th, 2025
Days on Market	9
Zoning	Zone 53
Condo Fee	\$547

DATA IS DEEMED RELIABLE BUT IS NOT GUARANTEED ACCURATE BY THE REALTORS® ASSOCIATION OF EDMONTON. COPYRIGHT 2025 BY THE REALTORS® ASSOCIATION OF EDMONTON. ALL RIGHTS RESERVED. Trademarks are owned or controlled by the Canadian Real Estate Association (CREA) and identify real estate professionals who are members of CREA (REALTOR®, REALTORS®) and/or the quality of services they provide (MLS®, Multiple Listing Service®)

Listing information last updated on July 27th, 2025 at 4:02pm MDT