

\$1,100,000 - Rge Rd 102 Twp Rd 552a, Rural St. Paul County

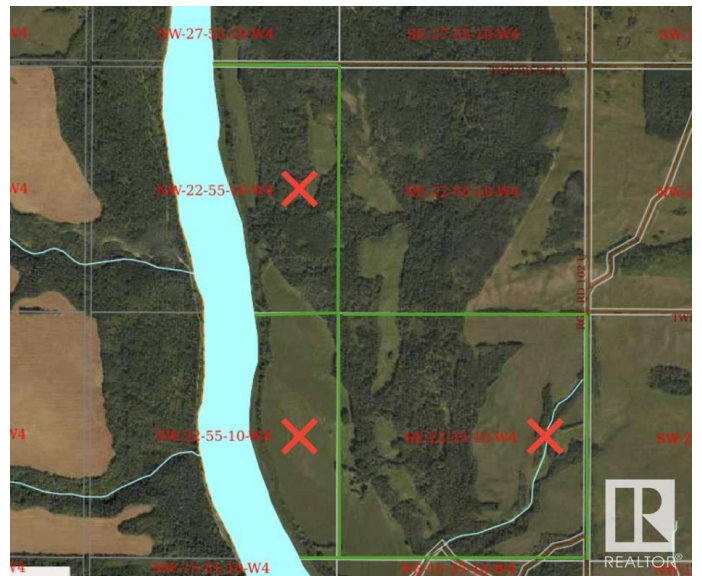
MLS® #E4448739

\$1,100,000

0 Bedroom, 0.00 Bathroom,
Rural on 267.41 Acres

None, Rural St. Paul County, AB

Offered for the first time in over 100 years, this unique property presents a chance to acquire three titled land parcels along the North Saskatchewan River. Known locally as the Popowich homestead, these lands are located on the north bank of the Beauvallon Crossing, offering over one mile of river frontage on title. The property is remote and surrounded by miles of crown land and community pasture, providing privacy and seclusion. Currently used for hay production, the land features approximately 160 acres of productive grassland. The lower bank along the river showcases fertile soil, with remnants of the original homestead and yard site still visible. A unique opportunity to carry forward the stewardship of this historic land.



Essential Information

MLS® #	E4448739
Price	\$1,100,000
Bathrooms	0.00
Acres	267.41
Type	Rural
Sub-Type	Vacant Lot/Land
Status	Active

Community Information

Address	Rge Rd 102 Twp Rd 552a
Area	Rural St. Paul County
Subdivision	None
City	Rural St. Paul County
County	ALBERTA
Province	AB
Postal Code	T0A 3A0

Exterior

Exterior Features Boating, Private Setting, River Valley View, River View, Treed Lot, Waterfront Property

Additional Information

Date Listed	July 16th, 2025
Days on Market	11
Zoning	Zone 60

DATA IS DEEMED RELIABLE BUT IS NOT GUARANTEED ACCURATE BY THE REALTORS® ASSOCIATION OF EDMONTON. COPYRIGHT 2025 BY THE REALTORS® ASSOCIATION OF EDMONTON. ALL RIGHTS RESERVED. Trademarks are owned or controlled by the Canadian Real Estate Association (CREA) and identify real estate professionals who are members of CREA (REALTOR®, REALTORS®) and/or the quality of services they provide (MLS®, Multiple Listing Service®)

Listing information last updated on July 27th, 2025 at 3:32am MDT