

# \$849,000 - 6403 26 St, Rural Leduc County

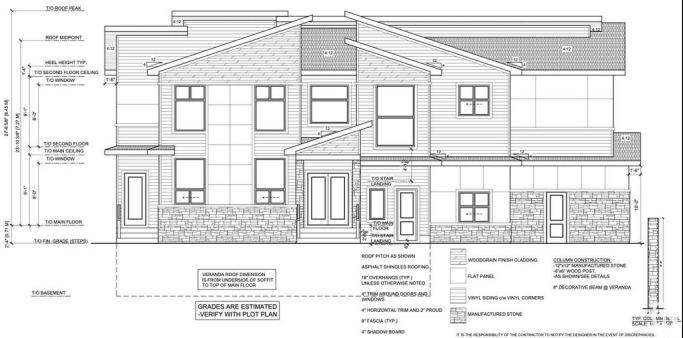
MLS® #E4449512

**\$849,000**

5 Bedroom, 4.00 Bathroom, 2,730 sqft  
Rural on 0.14 Acres

Churchill Meadow, Rural Leduc County, AB

Welcome to this one-of-a-kind gem in the heart of Churchill Meadows, offering a rare layout and unmatched curb appeal! Situated on a massive corner lot, this stunning home boasts over 2700 sqft with triple car garage, an elegant entrance, and a grand open-to-below design that creates an airy feel right from the moment you step in. The main floor features a bedroom with a full bath. Youâ€™ll love the chefâ€™s kitchen with premium finishes, plus a f spice kitchen for added convenience. The spacious great room with soaring ceilings is perfect for entertaining. Upstairs, you'll find a luxurious primary suite with a 6-piece ensuite and a generous walk-in closet. A second master bedroom with a 4-piece ensuite, plus two additional bedrooms, another full bath, bonus room, and upstairs laundry complete this well-designed upper floor. This home blends function, luxury, and space like no otherâ€™perfect for large families. Photos are from a similar home built by the builder; actual finishes & layout may vary.



Built in 2025

## Essential Information

MLS® #	E4449512
Price	\$849,000
Bedrooms	5

Bathrooms	4.00
Full Baths	4
Square Footage	2,730
Acres	0.14
Year Built	2025
Type	Rural
Sub-Type	Detached Single Family
Style	2 Storey
Status	Active

### Community Information

Address	6403 26 St
Area	Rural Leduc County
Subdivision	Churchill Meadow
City	Rural Leduc County
County	ALBERTA
Province	AB
Postal Code	T4X 3A6

### Amenities

Features	Carbon Monoxide Detectors, Closet Organizers, Detectors Smoke, No Animal Home, No Smoking Home, Storage-In-Suite, See Remarks, 9 ft. Basement Ceiling
----------	---

### Interior

Interior Features	ensuite bathroom
Heating	Forced Air-1, Natural Gas
Fireplace	Yes
Stories	2
Has Basement	Yes
Basement	Full, Unfinished

### Exterior

Exterior	Wood
Exterior Features	Airport Nearby, Corner Lot, Cul-De-Sac, Golf Nearby, Playground Nearby, Shopping Nearby, See Remarks
Construction	Wood
Foundation	Concrete Perimeter

### Additional Information

Date Listed July 24th, 2025

Days on Market 52

Zoning Zone 80

DATA IS DEEMED RELIABLE BUT IS NOT GUARANTEED ACCURATE BY THE REALTORS® ASSOCIATION OF EDMONTON. COPYRIGHT 2025 BY THE REALTORS® ASSOCIATION OF EDMONTON. ALL RIGHTS RESERVED. Trademarks are owned or controlled by the Canadian Real Estate Association (CREA) and identify real estate professionals who are members of CREA (REALTOR®, REALTORS®) and/or the quality of services they provide (MLS®, Multiple Listing Service®)

Listing information last updated on September 13th, 2025 at 9:47pm MDT