

\$175,000 - 1904 Jubilee Road, Sherwood Park

MLS® #E4449629

\$175,000

4 Bedroom, 2.00 Bathroom, 1,507 sqft

Land Lease Community on 0.00 Acres

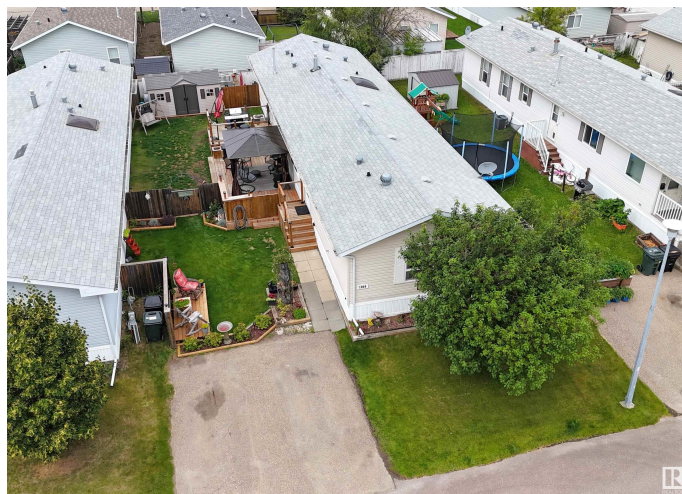
Jubilee Landing, Sherwood Park, AB

2007 Winalta-built modular home in the well-maintained community of Jubilee Landing. This 1,508 square foot home features central air conditioning, vaulted ceiling, vinyl plank flooring and a fantastic open layout. Spacious entryway, bright living room & dining room with large deck-facing windows, laundry room and a beautiful gourmet kitchen with skylight, movable island, built-in dishwasher, corner pantry and plenty of countertop space. 2 full bathrooms and 4 bedrooms, including the owner's suite with walk-in closet & 4-piece ensuite with oversized tub. Fenced, landscaped yard with a gorgeous tiered deck, gazebo, 2 massive storage sheds and a front sitting area. Conveniently located with easy access to the Yellowhead Highway and all amenities. Check it out before it's gone!

Built in 2007

Essential Information

MLS® #	E4449629
Price	\$175,000
Bedrooms	4
Bathrooms	2.00
Full Baths	2
Square Footage	1,507
Acres	0.00
Year Built	2007



Type	Land Lease Community
Sub-Type	Detached Single Family
Style	Bungalow
Status	Active

Community Information

Address	1904 Jubilee Road
Area	Sherwood Park
Subdivision	Jubilee Landing
City	Sherwood Park
County	ALBERTA
Province	AB
Postal Code	T8H 2N7

Amenities

Parking Spaces	2
Parking	2 Outdoor Stalls, Front Drive Access, Parking Pad Cement/Paved

Interior

Interior Features	ensuite bathroom
Appliances	Air Conditioning-Central, Dishwasher-Built-In, Dryer, Fan-Ceiling, Microwave Hood Fan, Refrigerator, Washer, Window Coverings, Stove-Induction
Heating	Forced Air-1, Natural Gas

Exterior

Exterior	Modular
Construction	Modular
Foundation	Piling

Additional Information

Date Listed	July 25th, 2025
Days on Market	2
Zoning	Zone 25

DATA IS DEEMED RELIABLE BUT IS NOT GUARANTEED ACCURATE BY THE REALTORS® ASSOCIATION OF EDMONTON. COPYRIGHT 2025 BY THE REALTORS® ASSOCIATION OF EDMONTON. ALL RIGHTS RESERVED. Trademarks are owned or controlled by the Canadian Real Estate Association (CREA) and identify real estate professionals who are members of CREA (REALTOR®, REALTORS®) and/or the quality of services they provide (MLS®, Multiple Listing Service®)

Listing information last updated on July 27th, 2025 at 3:47am MDT