

# \$1,295,000 - 19 52257 Range Road 231, Rural Strathcona County

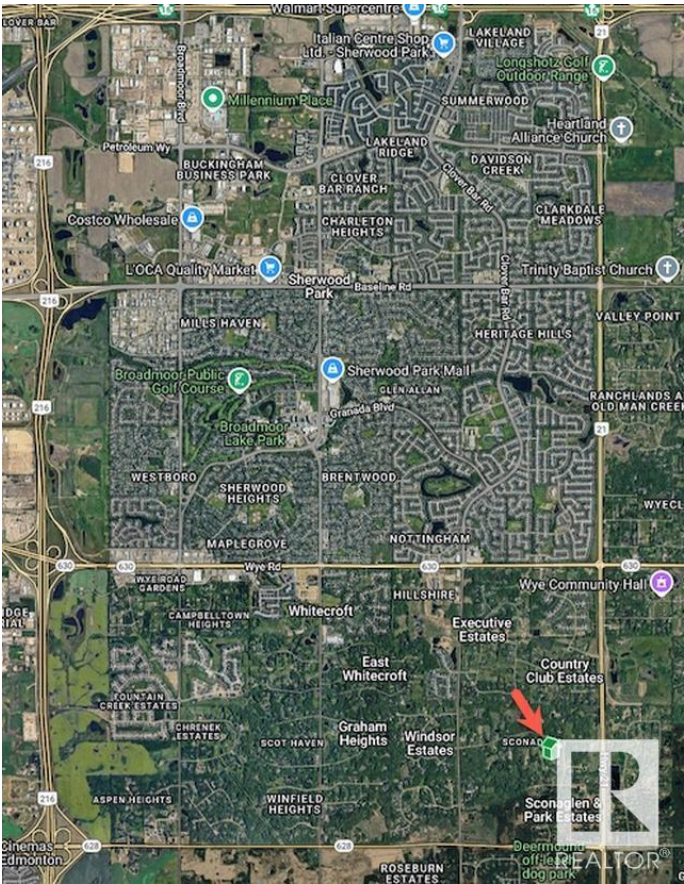
MLS® #E4449641

**\$1,295,000**

0 Bedroom, 0.00 Bathroom,  
Rural on 4.42 Acres

Sconadale, Rural Strathcona County, AB

Welcome to your future homesite in the highly desirable subdivision of Sconadale, located just minutes from Sherwood Park in beautiful Strathcona County! This 4.42-acre parcel offers the perfect blend of space, location, and readiness. The lot has a mix of cleared grassed land and trees on the West side and features a gravel access road leading to a large gravel pad—ideal for your future build. Whether you're dreaming of a custom estate home, a hobby farm, or simply more room to breathe, this property is ready for your vision.



## Essential Information

MLS® #	E4449641
Price	\$1,295,000
Bathrooms	0.00
Acres	4.42
Type	Rural
Sub-Type	Vacant Lot/Land
Status	Active

## Community Information

Address	19 52257 Range Road 231
Area	Rural Strathcona County
Subdivision	Sconadale

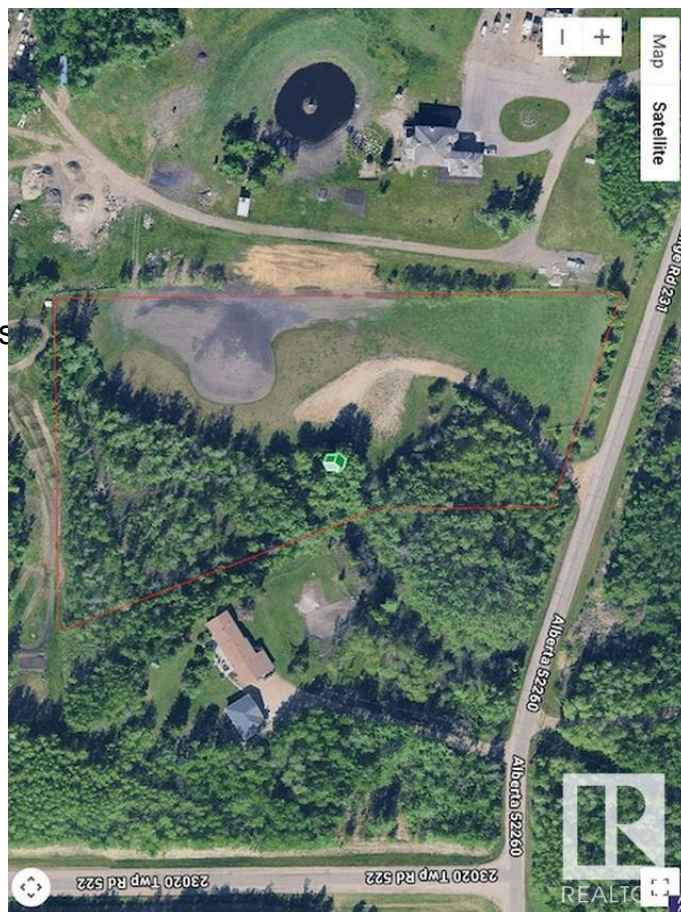
City Rural Strathcona County  
County ALBERTA  
Province AB  
Postal Code T8B 1A7

## Exterior

Exterior Features No Through Road, Not Lands

## Additional Information

Date Listed July 25th, 2025  
Days on Market 2  
Zoning Zone 80



DATA IS DEEMED RELIABLE BUT IS NOT GUARANTEED ACCURATE BY THE REALTORS® ASSOCIATION OF EDMONTON. COPYRIGHT 2025 BY THE REALTORS® ASSOCIATION OF EDMONTON. ALL RIGHTS RESERVED. Trademarks are owned or controlled by the Canadian Real Estate Association (CREA) and identify real estate professionals who are members of CREA (REALTOR®, REALTORS®) and/or the quality of services they provide (MLS®, Multiple Listing Service®)

Listing information last updated on July 26th, 2025 at 10:02pm MDT

