

\$249,900 - 105 273 Charlotte Way, Sherwood Park

MLS® #E4450223

\$249,900

2 Bedroom, 2.00 Bathroom, 1,048 sqft

Condo / Townhouse on 0.00 Acres

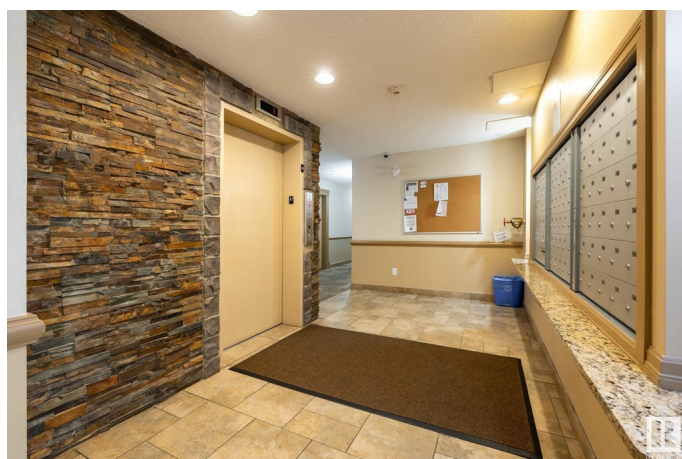
Lakeland Ridge, Sherwood Park, AB

Beautifully maintained 2 bedroom + DEN with 2 baths at Windsor Park. This main floor corner unit offers a spacious layout, with 1048 sq.ft. & is situated in the sought after community of Lakeland Ridge. Offering an ideal blend of comfort, style & convenience, this home features 2 generous sized bedrooms, with a 3pce bath in the primary bedroom, GRANITE COUNTERS in the kitchen & baths, GORGEOUS MOCHA KITCHEN CABINETS & so much more. The DEN is perfect for those who work from home, or just need that extra flex space, while the sunny patio offers a perfect space for your morning coffee. Other features include, 2 TITLED PARKING STALLS RIGHT OUTSIDE YOUR PATIO DOOR, A LARGE INSUITE STORAGE ROOM, EXERCISE ROOM, MEETING ROOM, & convenient access to all amenities.

Built in 2011

Essential Information

MLS® #	E4450223
Price	\$249,900
Bedrooms	2
Bathrooms	2.00
Full Baths	2
Square Footage	1,048



Acres	0.00
Year Built	2011
Type	Condo / Townhouse
Sub-Type	Lowrise Apartment
Style	Single Level Apartment
Status	Active

Community Information

Address	105 273 Charlotte Way
Area	Sherwood Park
Subdivision	Lakeland Ridge
City	Sherwood Park
County	ALBERTA
Province	AB
Postal Code	T8H 0N9

Amenities

Amenities	No Animal Home, No Smoking Home, Parking-Visitor, Sprinkler System-Fire, Storage-In-Suite, Vinyl Windows, See Remarks
Parking	2 Outdoor Stalls

Interior

Interior Features	ensuite bathroom
Appliances	Dishwasher-Built-In, Dryer, Microwave Hood Fan, Refrigerator, Stove-Electric, Washer, Window Coverings
Heating	Baseboard, Natural Gas
# of Stories	4
Stories	1
Has Basement	Yes
Basement	None, No Basement

Exterior

Exterior	Wood, Stone, Vinyl
Exterior Features	Landscaped, Playground Nearby, Public Transportation, Recreation Use, Schools, Shopping Nearby
Roof	Asphalt Shingles
Construction	Wood, Stone, Vinyl
Foundation	Concrete Perimeter

Additional Information

Date Listed July 28th, 2025

Days on Market 3

Zoning Zone 25

Condo Fee \$549

DATA IS DEEMED RELIABLE BUT IS NOT GUARANTEED ACCURATE BY THE REALTORS® ASSOCIATION OF EDMONTON. COPYRIGHT 2025 BY THE REALTORS® ASSOCIATION OF EDMONTON. ALL RIGHTS RESERVED. Trademarks are owned or controlled by the Canadian Real Estate Association (CREA) and identify real estate professionals who are members of CREA (REALTOR®, REALTORS®) and/or the quality of services they provide (MLS®, Multiple Listing Service®)

Listing information last updated on July 31st, 2025 at 5:03pm MDT