

## \$519,900 - 1128 33a Street, Edmonton

MLS® #E4453368

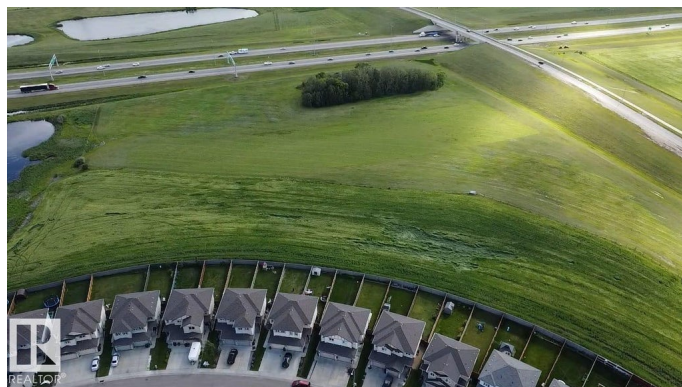
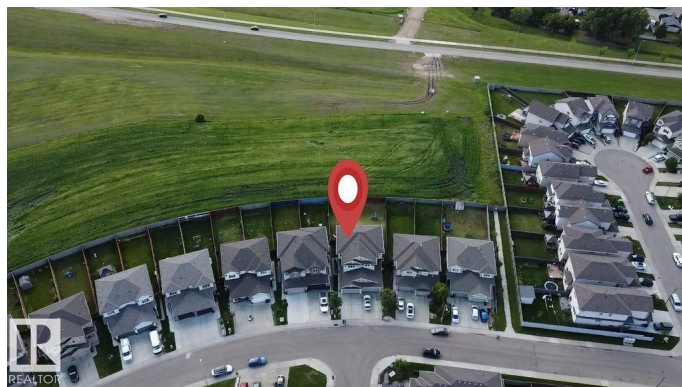
**\$519,900**

4 Bedroom, 3.50 Bathroom, 1,658 sqft

Single Family on 0.00 Acres

Laurel, Edmonton, AB

Stunning Duplex on Massive Lot, backing to green space, Fully finished basement with separate entrance and second kitchen. Incredible opportunity to own this beautifully maintained 1650+ sqft duplex with a double attached garage. The main floor offers a bright and open layout with a spacious living room, modern kitchen with pantry, large foyer and a 2-piece bath. Upstairs you'll find a luxurious primary suite with walk-in closet, and 4-piece ensuite, plus a bonus room, two additional bedrooms, and another 4-piece bath. In basement you will find another bedroom, living area and second kitchen. Enjoy summer days in the massive backyard, perfect for entertaining or relaxing. Prime location! Just a few minutes walk to Svend Hansen Kâ€™9 School, and a short drive to new high school, Meadows Rec Centre, shopping, dining, and major commuter routes. Donâ€™t miss this rare combination of space, location, and versatility!



Built in 2016

### Essential Information

MLS® #	E4453368
Price	\$519,900
Bedrooms	4
Bathrooms	3.50

Full Baths	3
Half Baths	1
Square Footage	1,658
Acres	0.00
Year Built	2016
Type	Single Family
Sub-Type	Half Duplex
Style	2 Storey
Status	Active

### Community Information

Address	1128 33a Street
Area	Edmonton
Subdivision	Laurel
City	Edmonton
County	ALBERTA
Province	AB
Postal Code	T6T 2C4

### Amenities

Amenities	Ceiling 9 ft., Deck
Parking	Double Garage Attached

### Interior

Interior Features	ensuite bathroom
Appliances	Dishwasher-Built-In, Dryer, Garage Control, Garage Opener, Hood Fan, Washer, Window Coverings, Refrigerators-Two, Stoves-Two
Heating	Forced Air-1, Natural Gas
Stories	3
Has Suite	Yes
Has Basement	Yes
Basement	Full, Finished

### Exterior

Exterior	Wood, Stone, Vinyl
Exterior Features	Fenced, Landscaped, No Back Lane, Playground Nearby, Public Transportation, Schools, Shopping Nearby
Roof	Asphalt Shingles
Construction	Wood, Stone, Vinyl

Foundation                      Concrete Perimeter

**Additional Information**

Date Listed                      August 16th, 2025

Days on Market                1

Zoning                              Zone 30

DATA IS DEEMED RELIABLE BUT IS NOT GUARANTEED ACCURATE BY THE REALTORS® ASSOCIATION OF EDMONTON. COPYRIGHT 2025 BY THE REALTORS® ASSOCIATION OF EDMONTON. ALL RIGHTS RESERVED.Trademarks are owned or controlled by the Canadian Real Estate Association (CREA) and identify real estate professionals who are members of CREA (REALTOR®, REALTORS®) and/or the quality of services they provide (MLS®, Multiple Listing Service®)

Listing information last updated on August 17th, 2025 at 12:47am MDT