

Courtesy Of Drew A Carlson Of Exp Realty

\$447,000 - 1220 Gillespie Crescent, Edmonton

MLS® #E4454123

\$447,000

5 Bedroom, 2.50 Bathroom, 1,606 sqft
Single Family on 0.00 Acres

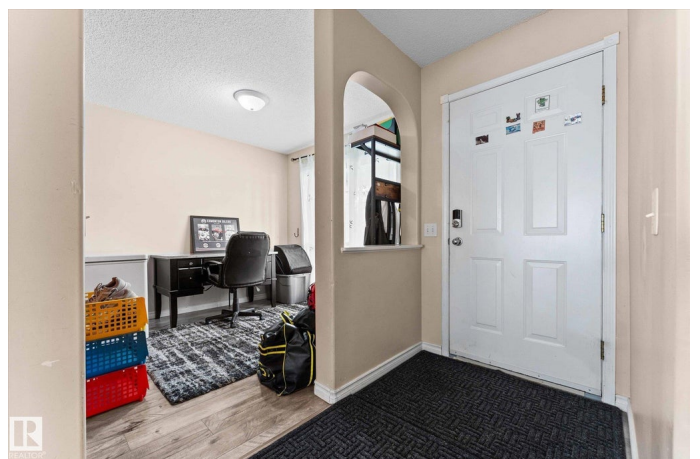
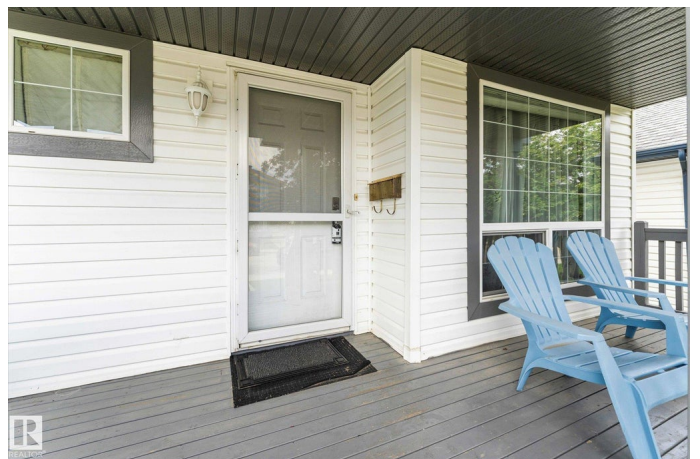
Glastonbury, Edmonton, AB

Welcome to this charming 2-storey home in the sought-after community of Glastonbury! Enjoy summer evenings on the extended front veranda. Inside, you'll find a bright, versatile front room—perfect as a formal dining space or office. The open-concept kitchen offers an island, ample cabinetry, hood fan, and fridge, stove, dishwasher, microwave all stainless steel. Next you'll see a dining area that flows seamlessly into the living room with backyard access. A 2-piece powder room completes the main floor. Upstairs features a spacious primary with walk-in closet and 4-piece ensuite, plus two additional bedrooms and another full bath. The unfinished basement features washer, dryer, and roughed-in plumbing, ready for your vision. Enjoy a beautifully landscaped west-facing yard with a large cedar deck. The double detached garage includes a full workshop above. This home is close to Anthony Henday, Whitemud, WEM, and nearby schools

Built in 2002

Essential Information

MLS® #	E4454123
Price	\$447,000
Bedrooms	5
Bathrooms	2.50



Full Baths	2
Half Baths	1
Square Footage	1,606
Acres	0.00
Year Built	2002
Type	Single Family
Sub-Type	Detached Single Family
Style	2 Storey
Status	Active

Community Information

Address	1220 Gillespie Crescent
Area	Edmonton
Subdivision	Glastonbury
City	Edmonton
County	ALBERTA
Province	AB
Postal Code	T5T 6M6

Amenities

Amenities	Deck, Front Porch
Parking Spaces	4
Parking	Double Garage Detached

Interior

Interior Features	ensuite bathroom
Appliances	Dishwasher-Built-In, Dryer, Garage Control, Garage Opener, Hood Fan, Oven-Microwave, Refrigerator, Stove-Electric, Vacuum System Attachments, Vacuum Systems, Washer, Window Coverings
Heating	Forced Air-1, Natural Gas
Stories	2
Has Basement	Yes
Basement	Full, Partially Finished

Exterior

Exterior	Wood, Vinyl
Exterior Features	Fenced, Flat Site, Golf Nearby, Landscaped, Playground Nearby, Public Transportation, Schools, Shopping Nearby
Roof	Asphalt Shingles

Construction Wood, Vinyl
Foundation Concrete Perimeter

Additional Information

Date Listed August 21st, 2025
Days on Market 15
Zoning Zone 58

DATA IS DEEMED RELIABLE BUT IS NOT GUARANTEED ACCURATE BY THE REALTORS® ASSOCIATION OF EDMONTON. COPYRIGHT 2025 BY THE REALTORS® ASSOCIATION OF EDMONTON. ALL RIGHTS RESERVED. Trademarks are owned or controlled by the Canadian Real Estate Association (CREA) and identify real estate professionals who are members of CREA (REALTOR®, REALTORS®) and/or the quality of services they provide (MLS®, Multiple Listing Service®)

Listing information last updated on September 5th, 2025 at 11:33am MDT