

## \$222,500 - 223 Dickinsfield Court, Edmonton

MLS® #E4462532

**\$222,500**

3 Bedroom, 1.50 Bathroom, 1,173 sqft  
Condo / Townhouse on 0.00 Acres

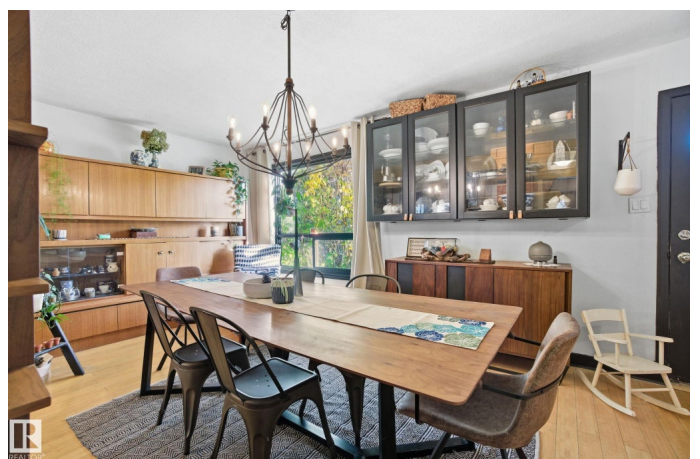
Evansdale, Edmonton, AB

Located in Evansdale, close to schools, playgrounds and transportation, makes this a great place to call home. Ideal for a first-time homeowner or someone wanting an easy-care lifestyle. 3 bedrooms up with a remodelled 4 piece bathroom. The main floor has hardwood flooring, an updated kitchen, an island working area, a half bath and a large living room with south-facing windows. But wait! Do you like to entertain? Or, perhaps, simply have more room for sit-down meals? If so, then you will appreciate how the living room is being used as an eating/dining room to gather with family and friends. And it totally makes sense, especially since there is a wonderful lounge area in the finished basement. Plus, a fenced patio backing onto a walkway. With it's eclectic flare, this home is not for everyone. It's for people who think "out of the box"; who are comfortable being a bit different; who like and can live with imperfection. If this describes you, then be sure to have a look. You won't be disappointed.

Built in 1972

### Essential Information

MLS® #	E4462532
Price	\$222,500
Bedrooms	3



Bathrooms	1.50
Full Baths	1
Half Baths	1
Square Footage	1,173
Acres	0.00
Year Built	1972
Type	Condo / Townhouse
Sub-Type	Townhouse
Style	2 Storey
Status	Active

### Community Information

Address	223 Dickinsfield Court
Area	Edmonton
Subdivision	Evansdale
City	Edmonton
County	ALBERTA
Province	AB
Postal Code	T5E 5V8

### Amenities

Amenities	On Street Parking, Hot Water Natural Gas, No Animal Home, No Smoking Home, Parking-Plug-Ins, Patio, Vinyl Windows
Parking Spaces	1
Parking	Stall

### Interior

Appliances	Dishwasher-Built-In, Dryer, Refrigerator, Stove-Electric, Washer, Window Coverings
Heating	Forced Air-1, Natural Gas
Stories	3
Has Basement	Yes
Basement	Full, Finished

### Exterior

Exterior	Wood, Vinyl
Exterior Features	Fenced, Flat Site, Landscaped, Park/Reserve, Playground Nearby, Public Swimming Pool, Public Transportation, Schools, Shopping Nearby

Roof	Asphalt Shingles
Construction	Wood, Vinyl
Foundation	Concrete Perimeter

### **School Information**

Elementary	Evansdale
Middle	Dickensfield
High	Queen Elizabeth

### **Additional Information**

Date Listed	October 17th, 2025
Days on Market	2
Zoning	Zone 02
Condo Fee	\$225

DATA IS DEEMED RELIABLE BUT IS NOT GUARANTEED ACCURATE BY THE REALTORS® ASSOCIATION OF EDMONTON. COPYRIGHT 2025 BY THE REALTORS® ASSOCIATION OF EDMONTON. ALL RIGHTS RESERVED. Trademarks are owned or controlled by the Canadian Real Estate Association (CREA) and identify real estate professionals who are members of CREA (REALTOR®, REALTORS®) and/or the quality of services they provide (MLS®, Multiple Listing Service®)

Listing information last updated on October 19th, 2025 at 1:47am MDT