

\$220,000 - 33 Amberly Court, Edmonton

MLS® #E4465792

\$220,000

3 Bedroom, 2.00 Bathroom, 1,030 sqft
Condo / Townhouse on 0.00 Acres

Casselman, Edmonton, AB

RENOVATED, END UNIT TOWNHOUSE.

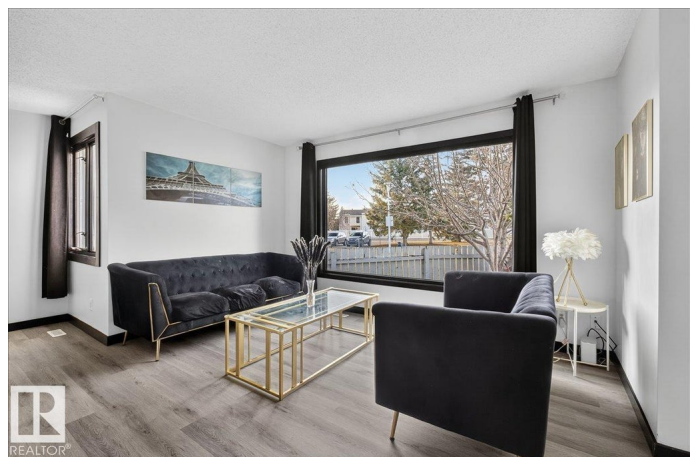
Welcome to Amberly Court! Tucked away on a quiet street in Casselman and steps from parks, schools, transit, shopping & more.

Inside, enjoy the modern feel with fresh paint and new vinyl plank flooring throughout. The bright living room is flooded with natural light from the new front window. The kitchen features floor-to-ceiling cabinetry, granite countertops, and some newer appliances. Upstairs offers new carpet, 3 spacious bedrooms, and a fully renovated 4pc bath with a new vanity, toilet, flooring, tile surround, and tub. The fully finished basement adds a large rec room and another updated 4pc bathroom. Additional perks include a newer water softener, furnace, and an assigned parking stall. This home is move-in ready. Perfect for first-time buyers or investors!

Built in 1974

Essential Information

MLS® #	E4465792
Price	\$220,000
Bedrooms	3
Bathrooms	2.00
Full Baths	2
Square Footage	1,030
Acres	0.00



Year Built	1974
Type	Condo / Townhouse
Sub-Type	Townhouse
Style	2 Storey
Status	Active

Community Information

Address	33 Amberly Court
Area	Edmonton
Subdivision	Casselman
City	Edmonton
County	ALBERTA
Province	AB
Postal Code	T5A 2H9

Amenities

Amenities	See Remarks
Parking Spaces	1
Parking	Stall

Interior

Appliances	Dishwasher-Built-In, Dryer, Microwave Hood Fan, Refrigerator, Stove-Electric, Washer, Window Coverings
Heating	Forced Air-1, Natural Gas
Stories	3
Has Basement	Yes
Basement	Full, Finished

Exterior

Exterior	Wood, Vinyl
Exterior Features	Corner Lot, Fenced, Playground Nearby, Public Transportation, Schools, Shopping Nearby
Roof	Asphalt Shingles
Construction	Wood, Vinyl
Foundation	Concrete Perimeter

School Information

Elementary	Mcleod/St.Dominic
Middle	Steele Heights/J.J. Bowlen

High M.E. Lazerte/Archbishop O'

Additional Information

Date Listed November 14th, 2025

Days on Market 6

Zoning Zone 02

Condo Fee \$300

DATA IS DEEMED RELIABLE BUT IS NOT GUARANTEED ACCURATE BY THE REALTORS® ASSOCIATION OF EDMONTON. COPYRIGHT 2025 BY THE REALTORS® ASSOCIATION OF EDMONTON. ALL RIGHTS RESERVED. Trademarks are owned or controlled by the Canadian Real Estate Association (CREA) and identify real estate professionals who are members of CREA (REALTOR®, REALTORS®) and/or the quality of services they provide (MLS®, Multiple Listing Service®)

Listing information last updated on November 20th, 2025 at 12:32am MST